

ROUGH TERRAIN TELEHANDLER

## GTH™-4010



### Specifications

MODEL	GTH™ -4010	
MEASUREMENTS	Metric	US
Lifting height maximum	9.82 m	32 ft 3 in
Lifting capacity maximum	4,000 kg	8,818 lbs
Lift capacity at maximum height	3,000 kg	6,614 lbs
Lift capacity at maximum reach	2,000 kg	4,409 lbs
Forward reach maximum	6.07 m	19 ft 11 in
Reach at maximum height	0.65 m	2 ft 2 in
A Height	2.41 m	7 ft 11 in
B Height at steering wheel	1.65 m	5 ft 5 in
C Width	2.25 m	7 ft 5 in
D Inside cab width	0.78 m	2 ft 7 in
E Track	1.85 m	6 ft 1 in
F Wheelbase	2.75 m	9 ft
G Length at front wheels	4.39 m	14 ft 5 in
H Length at fork-holder plate	6.06 m	19 ft 11 in
I Ground clearance	0.40 m	1 ft 4 in
J Overall width, outriggers extended	2.93 m	9 ft 7 in
M1 Obstruction angle	32°	32°
M2 Departure angle	31°	31°

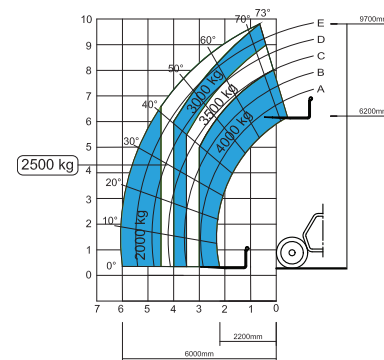
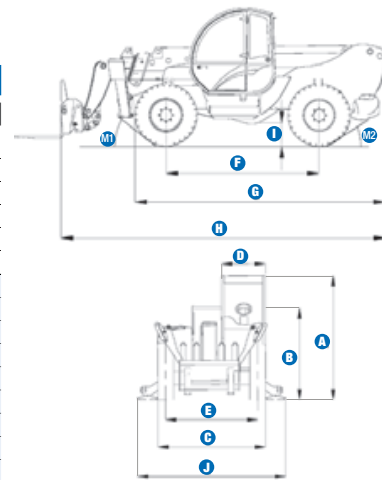
PRODUCTIVITY		
Inside/outside turning radius	1.80 m / 3.85 m	5 ft 11 in / 12 ft 8 in
Break out force (with 800L bucket SAE J 732)	5,500 kg	12,125 lbs
Drawbar pull	8,200 kg	9,920 lbs
Drive speed	30 km/h	18.6 mph
Fork-holder plate rotation	128°	128°
Floating forks	L 1200 mm Section 120 x 45 mm	L 3 ft 11 in Section 4.7 in x 1.77 in
Tyres (DIN 70361)	405/70-24" PR14 8-hole wheel rim	
Lifting/lowering speed	13 / 8 sec	13 / 8 sec
Extension/retraction speed	20 / 24 sec	20 / 24 sec

POWER		
Engine	Deutz TD2011 L04W turbo diesel 68 kW (91 hp), Tier 3	
Tank capacities		
Fuel	90 L	23.8 gal
Engine oil	10 L	2.64 gal
Hydraulic oil	80 L	21.1 gal
Hydraulic output/pressure	87 L/min - 280 bar	23 gal/min - 4,061 psi

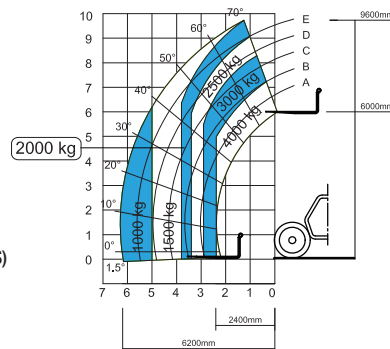
WEIGHT		
Weight*	9,300 kg	20,503 lbs

**STANDARDS COMPLIANCE** AS 1418.19, EN 1459  
 Operating cab conforms to ISO3471 (ROPS) and ISO3449 (FOPS)  
 Low emission engine conforms to UE 97/68 directives.

\* Weight will vary depending on options and/or country standards  
 \*\*\*\* Load ratings vary depending on attachment



Lift capacity chart (with outriggers)\*\*\*\*



Lift capacity chart (without outriggers)\*\*\*\*

Interim specifications. Subject to Australian standards compliance.

## ROUGH TERRAIN TELEHANDLER

# GTH™-4010



## Features

### STANDARD FEATURES

#### MEASUREMENTS

- 4,000 kg (8,818 lb) maximum lift capacity
- 9.82 m (32 ft 3 in) maximum lift height
- 6.07 m (19 ft 11 in) maximum forward reach

#### PRODUCTIVITY

- 4WD
- Four wheel steer
- Three steering modes:
  - Front wheel steer
  - Crab steer
  - Coordinated steer
- Power assisted steering
- Front outriggers
- Hydrostatic transmission with variable displacement pump and motor
- Two-speed mechanical gearbox
- Hydraulic proportional valve bank
- Multifunction joystick
- Limited slip differential on front axle
- Floating forks
- Quick coupling of attachments from cab
- Two-section door (glass upper/steel lower)
- Boom length and boom angle indicators
- Adjustable suspended seat
- Large diameter steering wheel
- Front and rear windscreen wipers
- Sunshield
- Roof protection grid inside cabin
- Front and rear lights
- Windshield protection grid
- Side mounted engine for easy access to components
- Oil immersed multi-disc brake on rear axles
- Lockable fuel tank

### STANDARD FEATURES cont.

- Load Management System (LMS) with:
  - Visible display with coloured LEDs
  - Audible alarm
  - Automatic lock-out of boom extension, lifting and lowering
- Control enable switch
- Lockout of outriggers with boom raised and/or boom extended
- Boom safety strut

#### POWER

- Deutz turbo diesel 68 kW (91 hp)

#### TYRES

- 405/70-24" tyres

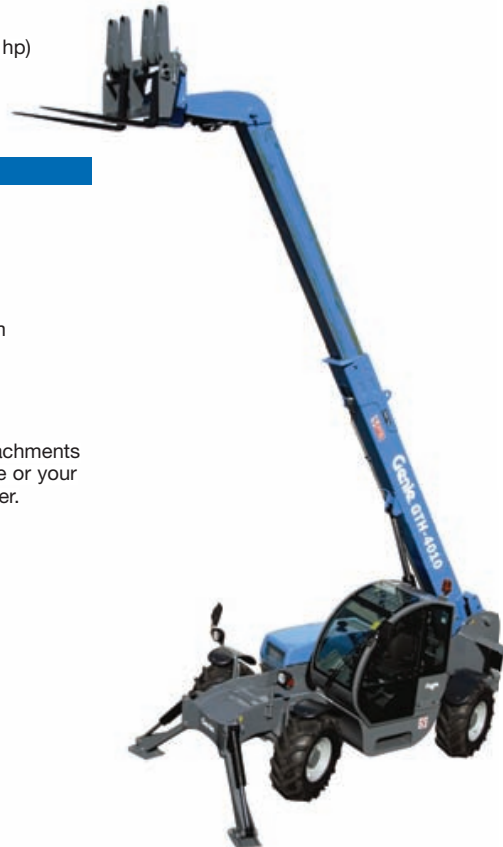
### OPTIONS & ACCESSORIES

#### PRODUCTIVITY

- Air conditioning
- Additional rear view mirror
- Adjustable spotlight on cab
- Adjustable spotlight on boom
- Hydraulic inching
- Spare wheel

#### ATTACHMENT OPTIONS

Genie has a large range of attachments available. Please contact Genie or your nearest Genie telehandler dealer.



Interim specifications. Subject to Australian standards compliance.

### Genie Australia – Toll free number 1800 788 633

**Brisbane (Head Office)**  
33 Kimberley Street  
Darra QLD 4076

**Sydney**  
74 Glendenning Road  
Glendenning NSW 2761

**Melbourne**  
374 Hammond Road  
Dandenong VIC 3175

**Perth**  
83 Bannister Road  
Canning Vale WA 6155

### Genie United States

18340 NE 76th Street  
P.O. Box 97030  
Redmond, Washington  
98073-9730

### Distributed by:

Effective date: April, 2009. Product specifications are subject to change without notice or obligation. The photographs and/or drawings in this document are for illustrative purposes only. Refer to the appropriate Operator's Manual for instructions on the proper use of this equipment. Failure to follow the appropriate Operator's Manual when using our equipment or to otherwise act irresponsibly may result in serious injury or death. The only warranty applicable to our equipment is the standard written warranty applicable to the particular product and sale and we make no other warranty, expressed or implied. Products and services listed may be trademarks, service marks or trade-names of Terex Corporation, Genie Industries, Inc. and/or their subsidiaries in the U.S.A. and many other countries and all rights are reserved. Terex is a Registered Trademark of Terex Corporation in the U.S.A. and many other countries. Genie is a Registered Trademark of Genie Industries, Inc in the U.S.A. and many other countries. Genie is a Terex Company. Copyright 2009 Terex Corporation

GTH-4010 090327 Ver1

[www.genieindustries.com](http://www.genieindustries.com)