

ROUGH TERRAIN TELEHANDLER

## GTH™-4017



### Specifications

MODEL	GTH™-4017	
MEASUREMENTS	Metric	US
Lifting height maximum with outriggers	16.72 m	54 ft 9 in
Lifting height maximum without outriggers	16.59 m	54 ft 4 in
Lifting capacity maximum	4,000 kg	8,818 lbs
Lift capacity at maximum height	2,500 kg	5,512 lbs
Lift capacity at maximum reach	600 kg	1,323 lbs
Forward reach maximum	12.55 m	41 ft 2 in
Reach at maximum height	0.59 m	1 ft 11 in
<b>A</b> Height	2.61 m	8 ft 7 in
<b>B</b> Height at steering wheel	1.65 m	5 ft 5 in
<b>C</b> Width	2.45 m	8 ft
<b>D</b> Inside cab width	0.78 m	2 ft 7 in
<b>E</b> Track	1.98 m	6 ft 6 in
<b>F</b> Wheelbase	2.85 m	9 ft 4 in
<b>G</b> Length at front wheels	4.70 m	15 ft 5 in
<b>H</b> Length at fork-holder plate	6.49 m	21 ft 3 in
<b>I</b> Ground clearance	0.42 m	1 ft 5 in
<b>J</b> Overall width, outriggers extended	2.95 m	9 ft 8 in
<b>M1</b> Obstruction angle	37°	37°
<b>M2</b> Departure angle	32°	32°

PRODUCTIVITY		
Inside/outside turning radius	2.15 m / 4.50 m	7 ft / 14 ft 9 in
Break out force	7,900 kg	17,417 lbs
(with 800L bucket SAE J 732)		
Drawbar pull	8,200 kg / 7,250 kg	18,076 lbs / 15,984 lbs
Drive speed	35 km/h	22 mph
Fork-holder plate rotation	145°	145°
Chassis levelling on the front axle	+/- 8°	+/- 8°
Floating forks	L 1200 mm Section 120 x 50 mm	L 3 ft 11 in Section 4.7 in x 2 in
Tyres (DIN 70361)	405/70-24" PR14 8-hole wheel rim	
Lifting/lowering speed**	14 / 10 sec	14 / 10 sec
Extension/retraction speed**	26 / 16 sec	26 / 16 sec

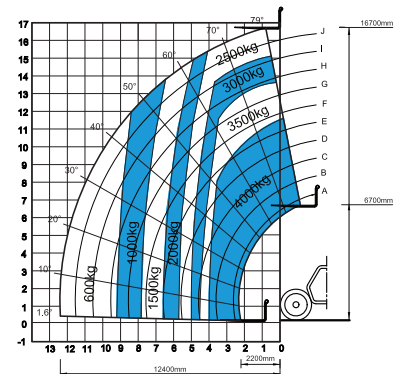
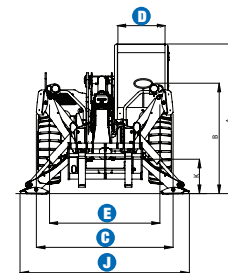
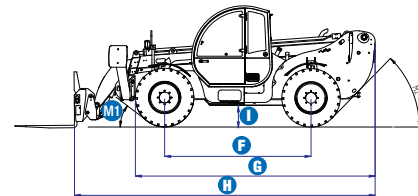
POWER		
Engine	Perkins 1104 D-44T turbo diesel 74.5 kW (100 hp), Tier 3	
Tank capacities		
Fuel	135 L	35.7 gal
Engine oil	7 L	1.8 gal
Hydraulic oil	150 L	39.6 gal

WEIGHT		
Weight***	11,850 kg	26,125 lbs

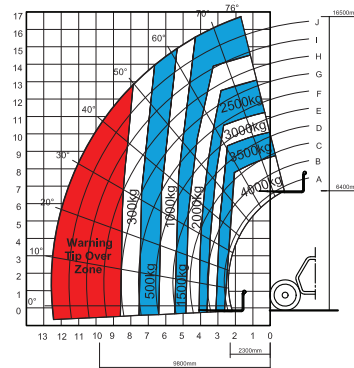
STANDARDS COMPLIANCE
AS 1418.19, EN 1459
EU Machinery Directive 98/37/CE
Operating cab conforms to ISO3471 (ROPS) and ISO3449 (FOPS)
Low emission engine conforms to EU Directive 97/68/EC stage III

\*\* Without load  
 \*\*\* Weight will vary depending on options and/or country standards  
 \*\*\*\* Load ratings vary depending on attachment

www.genieindustries.com



Lift capacity chart (with outriggers)\*\*\*\*



Lift capacity chart (without outriggers)\*\*\*\*

## ROUGH TERRAIN TELEHANDLER

# GTH™-4017



## Features

### STANDARD FEATURES

#### MEASUREMENTS

- 4,000 kg (8,818 lbs) maximum lift capacity
- 16.72 m (54 ft 9 in) maximum lift height
- 12.55 m (41 ft 2 in) maximum forward reach

#### PRODUCTIVITY

- 4WD
- Four wheel steer
- Three steering modes:
  - Front wheel steer
  - Crab steer
  - Coordinated steer
- Hydraulic line on boom
- Power assisted steering
- Front outriggers
- Hydrostatic transmission with variable displacement pump and motor electronically controlled
- Two-speed mechanical gearbox
- Multifunction electro-proportional 4 x 1 joystick
- Limited slip differential on front axle
- Chassis levelling on front axle +/- 8°
- Floating forks
- Quick coupling of attachments from cab
- Two-section door (glass upper/steel lower)
- Angle and length indicators on boom
- Adjustable suspended seat
- Large diameter steering wheel
- Front and rear windscreen wipers
- Sunshield
- Roof protection grid
- Two side rear view mirrors
- Front and rear lights
- Windshield protection grid
- Side mounted engine for easy access to components
- Oil immersed multi-disc brake on both axles
- Lockable fuel tank

### STANDARD FEATURES cont.

- Load Management System (LMS) with:
  - Load moment indicator with LEDs
  - Audible alarm
  - Automatic lock-out of boom extension, lifting and lowering
  - Automatic lock-out of outriggers
- Automatic lock-out of rear axle
- Control enable switch
- Hydraulic inching
- Boom safety strut

#### POWER

- Perkins turbo diesel 74.5 kW (100 hp)

#### TYRES

- 405/70-24" tyres

### OPTIONS & ACCESSORIES

#### PRODUCTIVITY

- Air conditioning
- Hydraulic winch pre-arrangement on boom
- Man-platform / Emergency hydraulic pump pre-arrangement
- Emergency pump kit
- Special air filter
- Adjustable spotlight on boom including cable reel and cable bracket
- Adjustable spotlight on cab
- Fish eye rear view mirror in the back
- Water muffler
- Rear wheels alignment sensor
- AM/FM radio with CD player

#### ATTACHMENT OPTIONS

Genie has a large range of attachments available. Please contact Genie or your nearest Genie telehandler dealer.



### Genie Australia – Toll free number 1800 788 633

**Brisbane (Head Office)**  
33 Kimberley Street  
Darra QLD 4076

**Sydney**  
74 Glendenning Road  
Glendenning NSW 2761

**Melbourne**  
374 Hammond Road  
Dandenong VIC 3175

**Perth**  
83 Bannister Road  
Canning Vale WA 6155

### Genie United States

18340 NE 76th Street  
P.O. Box 97030  
Redmond, Washington  
98073-9730

### Distributed by:

Effective date: April, 2009. Product specifications and prices are subject to change without notice or obligation. The photographs and/or drawings in this document are for illustrative purposes only. Refer to the appropriate Operator's Manual for instructions on the proper use of this equipment. Failure to follow the appropriate Operator's Manual when using our equipment or to otherwise act irresponsibly may result in serious injury or death. The only warranty applicable to our equipment is the standard written warranty applicable to the particular product and sale and we make no other warranty, expressed or implied. Products and services listed may be trademarks, service marks or trade-names of Terex Corporation, Genie Industries, Inc. and/or their subsidiaries in the U.S.A. and many other countries. All rights are reserved. Terex is a Registered Trademark of Terex Corporation in the U.S.A. and many other countries. Genie is a Registered Trademark of Genie Industries, Inc in the U.S.A. and many other countries. Genie is a Terex Company. Copyright 2009 Terex Corporation

GTH-4017 090327 Ver1

[www.genieindustries.com](http://www.genieindustries.com)