



## Rough Terrain Telehandler GTH™-4018

### Specifications

Model	GTH™-4018	
Measurements	Metric	Imperial
Lifting height maximum with outriggers	17.61 m	57 ft 9 in
Lifting height maximum without outriggers	17.38 m	57 ft 0 in
Lifting capacity maximum	4,000 kg	8,818 lbs
Lift capacity at maximum height	2,000 kg	4,409 lbs
Lift capacity at maximum reach	500 kg	1,102 lbs
Forward reach maximum	13.33 m	43 ft 9 in
Reach at maximum height	0.89 m	2 ft 11 in
▲ Height	2.44 m	8 ft
▲ Height at steering wheel	1.60 m	5 ft 3 in
▲ Width	2.42 m	7 ft 11 in
▲ Cab width	93 cm	3 ft
▲ Track	1.92 m	6 ft 4 in
▲ Wheelbase	2.95 m	9 ft 8 in
▲ Length at front wheels	4.83 m	15 ft 10 in
▲ Length at fork-holder plate	6.57 m	21 ft 6 in
▲ Ground clearance	35 cm	1 ft 2 in
▲ Overall width, outriggers extended	2.87 m	9 ft 5 in
▲ Overall length	7.77 m	25 ft 6 in
▲ Obstruction angle		40°
▲ Departure angle		46°

### Productivity

Inside/outside turning radius	1.87 m/3.55 m	6 ft 2 in/11 ft 8 in
Break-out force*	6,000 kg	13,228 lbs
Drawbar pull**	6,533 kg	14,402 lbs
Drive speed max.	27 km/h	17 mph
Fork-holder plate rotation		138°
Chassis levelling on front axle		+/- 6°
Tyres (DIN 70361)	405/70 24" PR14 8 hole wheel rim	
Lifting/lowering speed**	15 sec/10 sec	
Extension/retraction speed**	23 sec/16 sec	

### Power

Engine	Perkins 1104D-E44T turbo diesel 100 hp (75 kW), stage IIIA	
Transmission	Hydrostatic variable displacement pump linked to variable displacement motor. Both piston type.	
Function pumps	Boom & control system gear pump type: 280 Bar, 94 L/min. Service brake gear pump type: 250 Bar, 44 L/min.	
Fuel tank capacity	170 L	45 gal
Engine oil capacity	9.6 L	2.5 gal
Hydraulic oil tank capacity	112 L	29.6 gal

Weight***	12,640 kg	27,865 lbs
-----------	-----------	------------

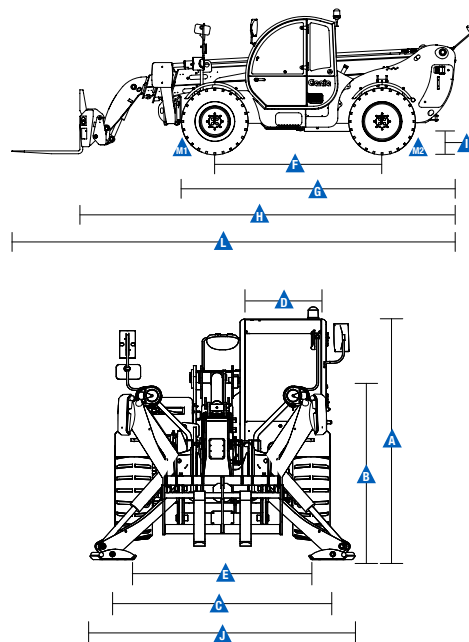
### Standards Compliance

AS 1418.19  
Operating Cab conforms to ISO 3471 (ROPS) and ISO 3449 (FOPS)

\* With 800 L shovel SAE J 732/80  
\*\* Without load  
\*\*\* Weight will vary depending on options and/or country standards

[www.genielift.com.au](http://www.genielift.com.au)

### Measurements



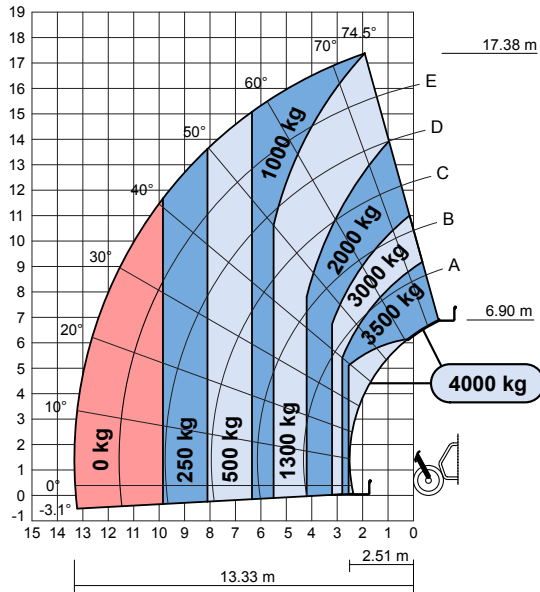


## Rough Terrain Telehandler

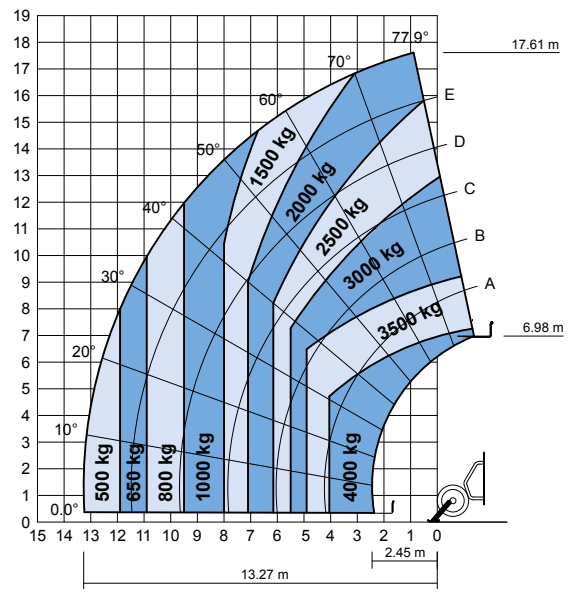
GTH™-4018

### Load Charts

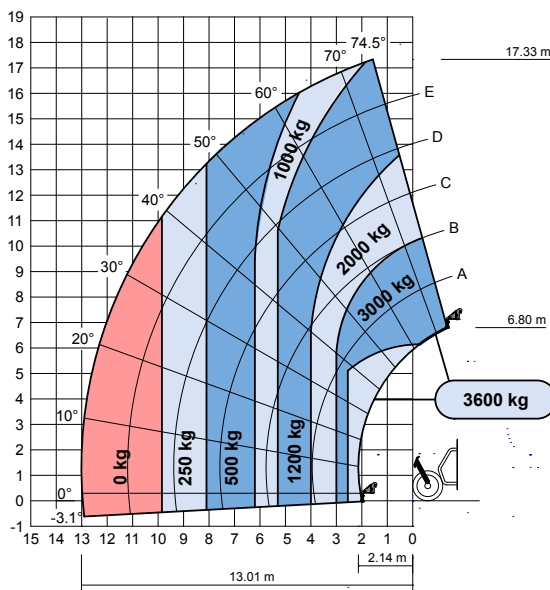
Off outriggers with forks



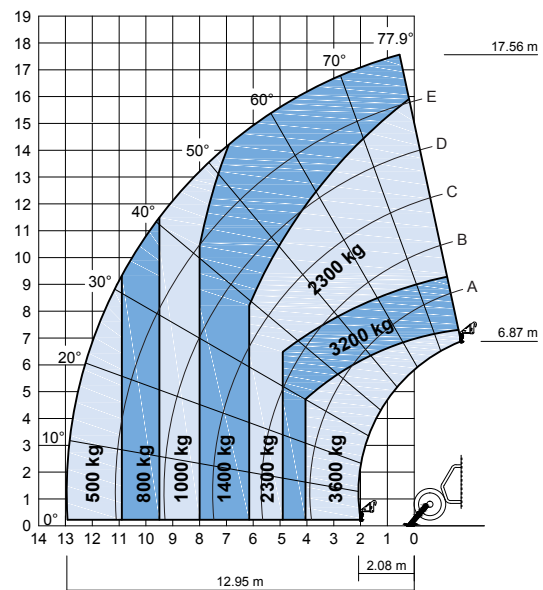
On outriggers with forks



Off outriggers with fixed hook



On outriggers with fixed hook

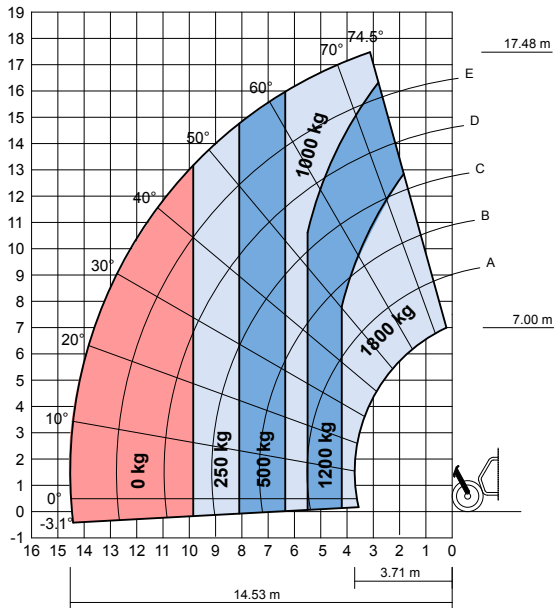




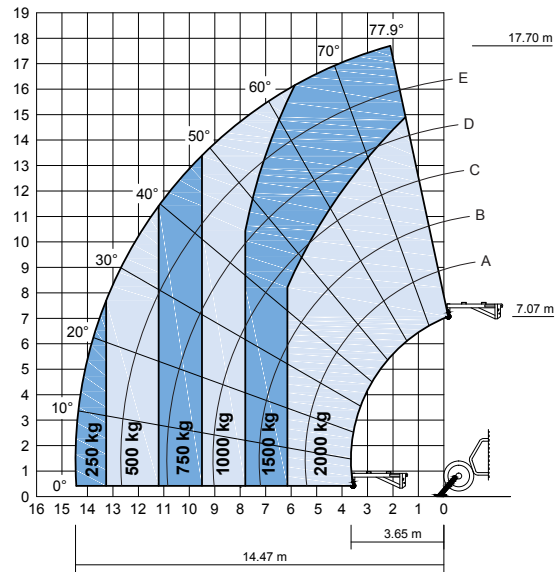
## Rough Terrain Telehandler GTH™-4018

### Load Charts

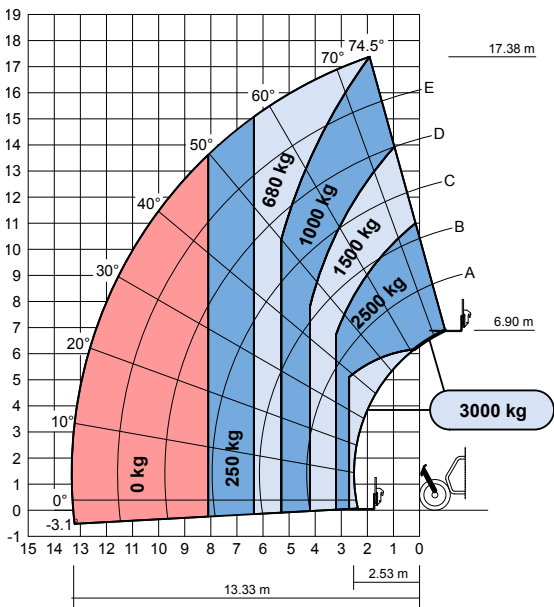
Off outriggers with 2m jib



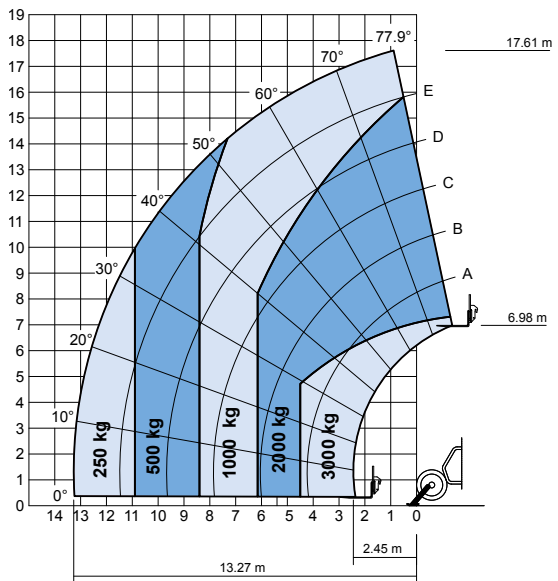
On outriggers with 2m jib



Off outriggers with side shift forks



On outriggers with side shift forks

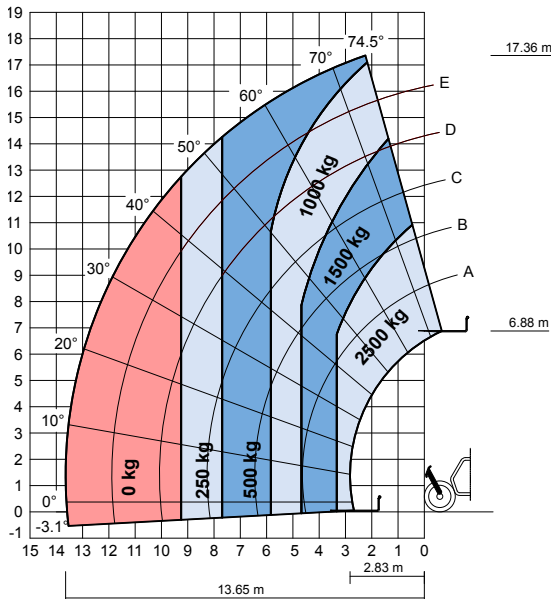




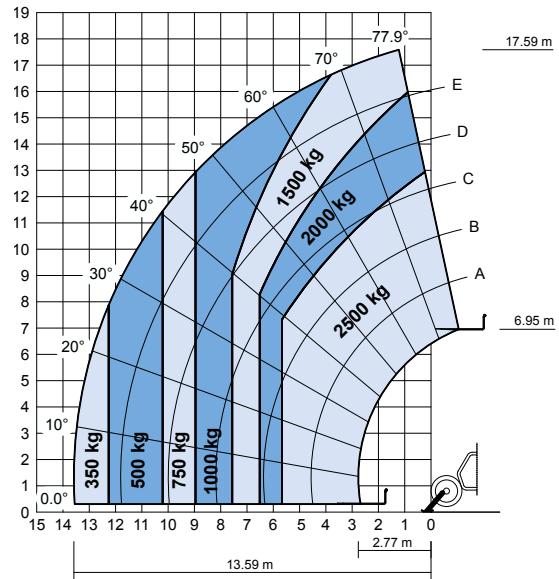
## Rough Terrain Telehandler GTH™-4018

### Load Charts

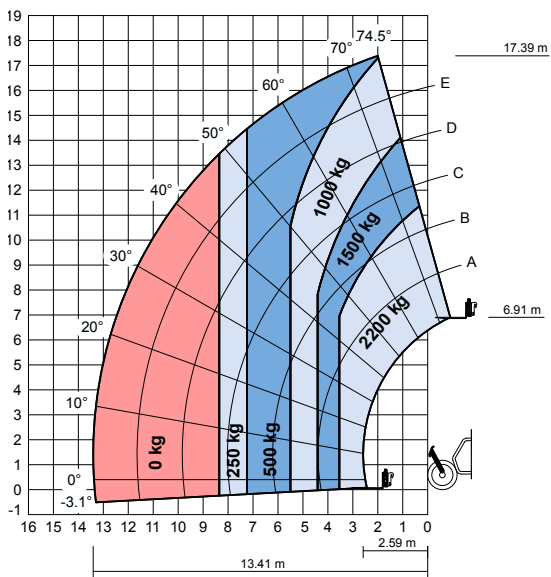
Off outriggers with extended forks



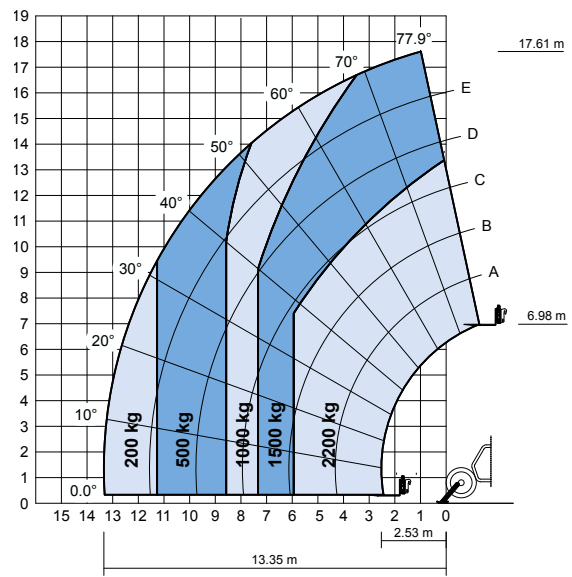
On outriggers with extended forks



Off outriggers with fork rotator



On outriggers with fork rotator



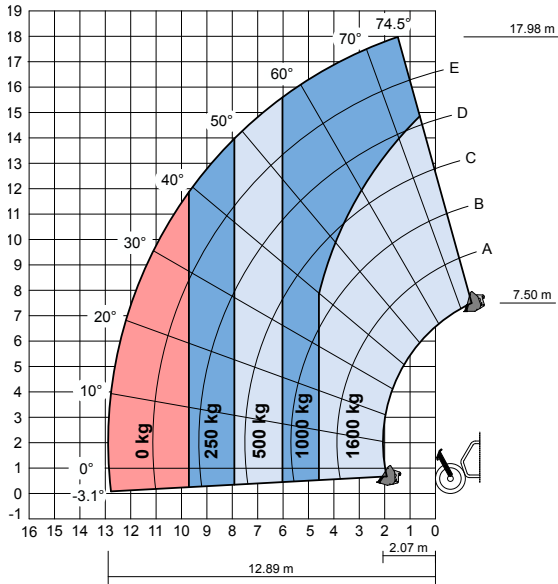
[www.genielift.com.au](http://www.genielift.com.au)



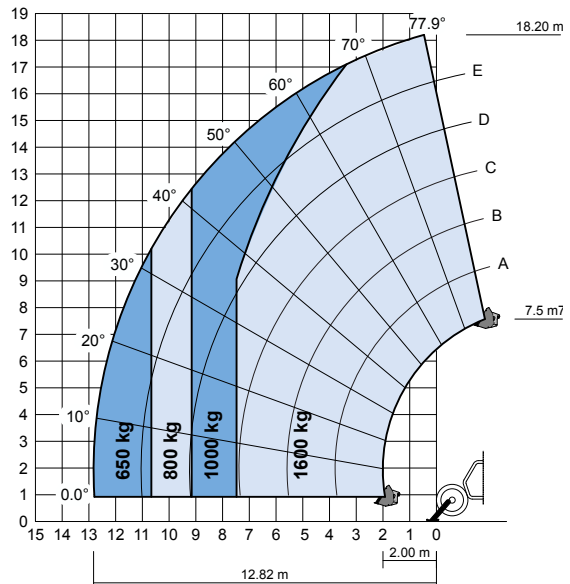
## Rough Terrain Telehandler GTH™-4018

### Load Charts

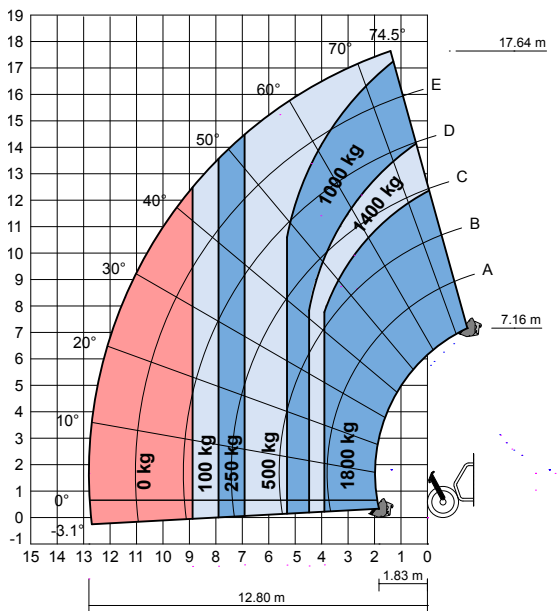
Off outriggers with 800 L GP bucket



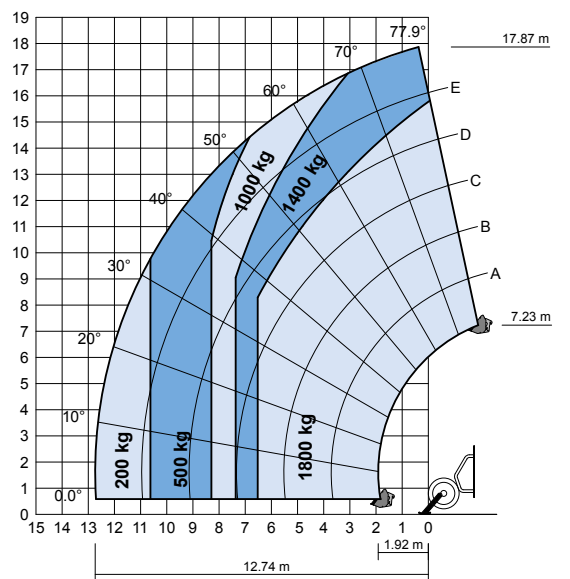
On outriggers with 800 L GP bucket



Off outriggers load chart 4-in-1 bucket 900 L



On outriggers load chart with 4-in-1 bucket 900 L



[www.genielift.com.au](http://www.genielift.com.au)



## Rough Terrain Telehandler GTH™-4018

### Features

#### Standard Features

##### Measurements

- 4,000 kg (8,818 lb) maximum lift capacity
- 17.61 m (57 ft 9 in) maximum lift height
- 13.33 m (43 ft 9 in) maximum forward reach

##### Productivity

- 4WD
- Four wheel steer
- 3 steering modes:
  - front wheel steer
  - crab steer
  - coordinated steer
- Power assisted steering
- Front outriggers
- Hydrostatic transmission with variable displacement pump
- Multifunction electroproportional 4x1 joystick
- Limited slip differential on front axle
- Two-section door (glass upper/steel lower)
- Angle and length indicators on boom correspond to load charts
- Adjustable suspended seat with operator detection seat contact switch
- Battery disconnection switch
- Large diameter steering wheel
- Front & rear windscreen wipers
- Sunshield
- Roof protection grid
- Two side view mirrors & rear fish eye mirror
- Front & rear lights
- Side mounted engine for easy access to components
- Oil immersed, multi-disc brakes on both axles
- Lockable fuel tank
- Maintenance collar
- Rear wheel alignment system
- Road/jobsite switch
- Air conditioning
- Hydraulic line on boom

#### Standard Features

- Load Management System (LMS) with:
  - Dynamic colour coded load chart
  - 7" colour display
  - Reversing camera
  - Optional front camera
  - Optional iButton user access control
- Hydraulic quick coupling for attachments
- Windshield protection grid

#### Power

- Perkins turbo charged diesel engine 100 hp (75 kW), stage IIIA

#### Tyres

- 405/70-24" PR14, 8 hole wheel rim

#### Options & Accessories

##### Productivity

- Adjustable spotlight on boom and cabin
- Biodegradable hydraulic oil
- 10 t hydraulic jack + 24 mm box wrench

##### Attachments

- Genie has a large range of attachments available. Please contact Genie or your nearest Genie telehandler dealer.



Genie – Toll free number 1800 788 633

#### Brisbane HEAD OFFICE

33 Kimberley Street  
Darra QLD 4076

#### Sydney

74 Glendenning Road  
Glendenning NSW 2761

#### Melbourne

133 Logis Boulevard  
Dandenong Sth VIC 3175

#### Adelaide

16-18 Nixon Road  
Wingfield SA 5013

#### Perth

126 Sheffield Road  
Welshpool WA 6106

#### Darwin

33 McCourt Road  
Yarrawonga NT 0830

#### Genie USA

18340 NE 76th Street  
P.O. Box 97030  
Redmond, Washington  
98073-9730

#### Distributed By:

Effective Date: June, 2015. Product specifications and prices are subject to change without notice or obligation. The photographs and/or drawings in this document are for illustrative purposes only. Refer to the appropriate Operator's Manual for instructions on the proper use of this equipment. Failure to follow the appropriate Operator's Manual when using our equipment or to otherwise act irresponsibly may result in serious injury or death. The only warranty applicable to our equipment is the standard written warranty applicable to the particular product and sale and we make no other warranty, express or implied. Products and services listed may be trademarks, service marks or trade names of Terex Corporation and/or their subsidiaries in the USA and many other countries. Genie is a registered trademark of Terex South Dakota, Inc. © 2015 Terex Corporation.

GTH4018 160923

[www.genielift.com.au](http://www.genielift.com.au)