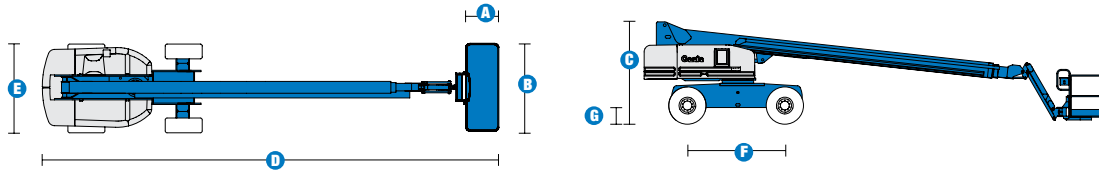


SELF-PROPELLED TELESCOPIC BOOM

S™-85



Specifications



MODEL	S™-85	
MEASUREMENTS	Metric	US
Working height maximum*	27.91 m	91 ft
Platform height maximum	25.91 m	85 ft
Horizontal reach maximum	23.32 m	76 ft 6 in
Below ground reach	2.90 m	9 ft 6 in
A Platform length	0.91 m	3 ft
B Platform width	2.44 m	8 ft
C Height - stowed	2.80 m	9 ft 2 in
D Length - stowed	12.19 m	40 ft
Length - transport (jib tucked under)	11.58 m	38 ft
E Width	2.49 m	8 ft 2 in
F Wheelbase	2.84 m	9 ft 4 in
G Ground clearance - centre	0.33 m	13 in

PRODUCTIVITY		
Lift capacity	227 kg	500 lbs
Platform rotation	160°	160°
Vertical jib rotation	135°	135°
Turntable rotation	360° continuous	
Turntable tailswing	1.42 m	4 ft 8 in
Drive speed - stowed	5.3 km/h	3.3 mph
Drive speed - raised/extended	1.04 km/h	0.65 mph
Gradeability - 4WD stowed**	45%	45%
Turning radius: inside	3.66 m	12 ft
outside	6.55 m	21 ft 6 in
Controls	12V DC proportional	
Tyres - RT lug - Foam filled	Foam Filled 18-625, 16 ply	

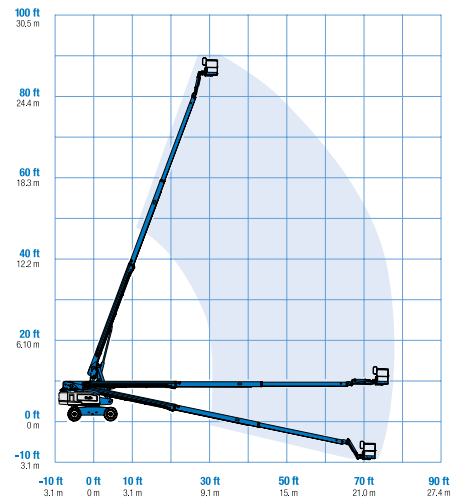
POWER		
Power source	Deutz TD2011 L04i 4 cylinder turbo diesel 55 kW (74 hp)	
Auxiliary power unit	12V DC	12V DC
Hydraulic tank capacity	151 L	40 gal
Fuel tank capacity	132 L	35 gal

WEIGHT***		
4WD	17,563 kg	38,719 lbs

STANDARDS COMPLIANCE	ANSI A92.5, CSA B354.4, CE Compliance, AS 1418.10
----------------------	---

* The metric equivalent of working height adds 2 m to platform height. U.S. adds 6 ft to platform height.
 ** Gradeability applies to driving on slopes. See operator's manual for details regarding slope ratings.
 *** Weight will vary depending on options and/or country standards.

RANGE OF MOTION S™-85



SELF-PROPELLED TELESCOPIC BOOMS

S™-85



Features

STANDARD FEATURES

MEASUREMENTS

- 27.91 m (91 ft) working height
- 23.32 m (76 ft 6 in) horizontal reach
- 227 kg (500 lbs) lift capacity

PRODUCTIVITY

- Self-leveling platform
- Hydraulic platform rotation
- Fully proportional Hall effect joystick controls
- Drive enable
- AC power cord to platform
- Horn
- Hour meter
- Tilt alarm
- Descent alarm
- 360° continuous turntable rotation
- 4WD
- Positive traction drive
- Two speed wheel motors
- Hydraulic oil cooler
- Alarm package
- Lockable platform control box covers

POWER

- 12V DC auxiliary power
- Deutz turbocharged diesel 74 hp (55 kW)
- Anti-restart engine protection
- Auto engine fault shutdown
- Engine gauge package

OPTIONS & ACCESSORIES

PRODUCTIVITY

- Platform swing gate
- Half mesh platform inserts with swing gate
- Platform top auxiliary rail
- Air line to platform
- Hostile environment kit
- Deluxe hostile environment kit
- Platform work lights
- Front driving lights

POWER OPTIONS

- AC generator packages (240V/50Hz, 7000W)
- Cold Weather Packages
- Diesel scrubber/spark arrestor muffler (catalytic muffler)
- Intake air pre-cleaner

PLATFORM OPTIONS

- Steel 8 ft (2.44 m)
- Steel 6 ft (1.83 m)

AXLE

- Fixed width with active oscillation

TIRE OPTIONS

- Rough terrain foam-filled (standard)
- Rough terrain non-marking foam-filled



Genie Australia – Toll free number 1800 788 633

Brisbane (Head Office)
33 Kimberley Street
Darra QLD 4076

Sydney
74 Glendenning Road
Glendenning NSW 2761

Melbourne
374 Hammond Road
Dandenong VIC 3175

Perth
126 Sheffield Road
Welshpool WA 6106

Genie United States

18340 NE 76th Street
P.O. Box 97030
Redmond, Washington
98073-9730

Distributed by:

Effective Date: April 2012. Product specifications and prices are subject to change without notice or obligation. The photographs and/or drawings in this document are for illustrative purposes only. Refer to the appropriate Operators' Manual for instructions on the proper use of this equipment. Failure to follow the Operators Manual when using our equipment or to otherwise act irresponsibly may result in serious injury or death. The only warranty applicable to our equipment is the standard written warranty applicable to the particular product and sale and we make no other warranty, express or implied. Products and services listed may be trademarks, service marks, or trade names of Terex Corporation, Terex South Dakota, Inc., and/or their subsidiaries in the USA and other countries. All rights reserved. Terex is a registered trademark of Terex Corporation in the USA and many other countries. ©2009 Terex Corporation.

www.genieindustries.com.au

S-85 090327 Ver1