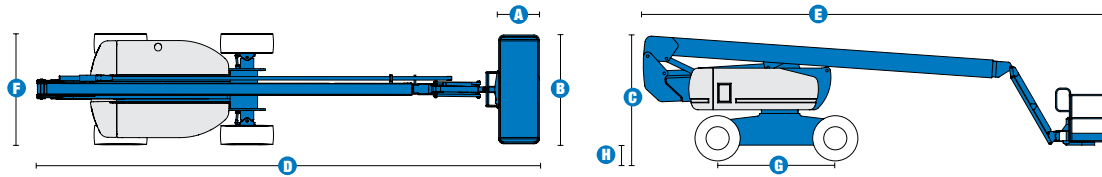


SELF-PROPELLED ARTICULATING BOOMS

Z™-80/60



Specifications



MODEL Z™-80/60

MEASUREMENTS	Metric	US
Working height maximum*	25.77 m	84 ft
Platform height maximum	23.77 m	78 ft
Horizontal reach maximum	18.29 m	60 ft
Up and over clearance maximum	8.83 m	29 ft
Below ground reach	4.83 m	15 ft 10 in
A Platform length	0.91 m	3 ft
B Platform width	2.44 m	8 ft
C Height - stowed	3.00 m	9 ft 10 in
D Length - stowed	11.27 m	37 ft
E Length - transport	11.27 m	37 ft
F Width	2.49 m	8 ft 2 in
G Wheelbase	2.85 m	9 ft 4 in
H Ground clearance - centre	0.30 m	12 in

PRODUCTIVITY

Lift capacity	227 kg	500 lbs
Platform rotation	160°	160°
Vertical jib rotation	135°	135°
Turntable rotation	360° continuous	
Turntable tailswing - riser up	1.17 m	3 ft 10 in
Turntable tailswing - riser down	2.24 m	7 ft 4 in
Drive speed - stowed	4.83 km/h	3.0 mph
Drive speed - raised**	1.1 km/h	0.68 mph
Lift speed to full height	76 sec	76 sec
Gradeability - 4WD - stowed***	45%	45%
Turning radius - 4WS inside	2.13 m	7 ft
Turning radius - 4WS outside	4.57 m	15 ft
Controls	12V DC proportional	
Tyres - RT Lug - Foam filled	445 / 500 710	

POWER

Power source	Deutz TD 2011 L04i 4 cylinder diesel 58 kW (78 hp)	
Auxiliary power unit	12V DC	12V DC
Hydraulic tank capacity	170 L	45 gal
Fuel tank capacity - diesel machines	132 L	35 gal

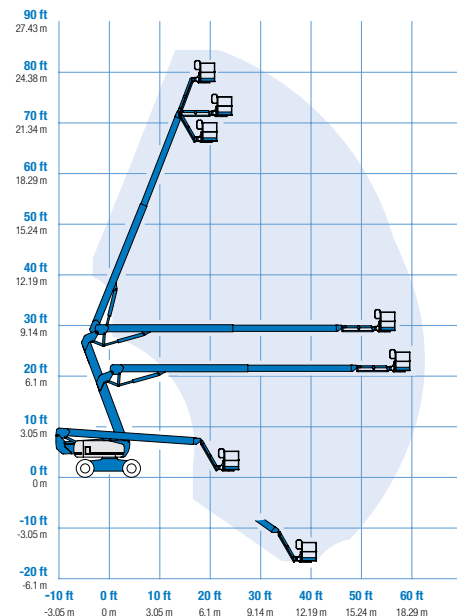
WEIGHT****

	17,010 kg	37,500 lbs
--	-----------	------------

STANDARDS COMPLIANCE ANSI A92.5, CSA B354.4, CE Compliance, AS 1418.10

* The metric equivalent of working height adds 2 m to platform height. U.S. adds 6 ft to platform height.
 ** In lift mode (platform raised), the machine is designed to operate on firm, level surfaces only.
 *** Gradeability applies to driving on slopes. See operator's manual for details regarding slope ratings.
 **** Weight will vary depending on options and/or country standards.

RANGE OF MOTION Z™-80/60



SELF-PROPELLED ARTICULATING BOOMS

Z™-80/60



Features

STANDARD FEATURES

MEASUREMENTS

- 25.77 m (84 ft) working height
- 18.28 m (60 ft) horizontal reach
- 8.83 m (29 ft) up and over clearance
- Up to 227 kg (500 lbs) lift capacity

PRODUCTIVITY

- 2.44 m (8 ft) steel platform
- 4WD
- 4WS
- Full-time active oscillating axle
- Rough terrain foam-filled
- 1.83 m (6 ft) jib with 135° range
- Self-leveling platform
- Hydraulic platform rotation
- Fully proportional Hall effect controls
- On-board diagnostics
- ALC 1000 electronic control system
- Hydraulic oil cooler
- Drive enable
- Horn
- Hour meter
- Tilt alarm
- 360° continuous turntable rotation
- Locking turntable covers
- Full-time positive traction drive
- Two speed wheel motors
- Four steering modes: front, rear, crab and coordinated
- Configurable controls to limit lift height to 21.34 m (70 ft)
- Thumb rocker steer
- Alarm package
- Dual flashing beacons

POWER

- 12V DC auxiliary power
- Deutz diesel 58 kW (78 hp)
- Anti-restart engine protection
- Auto engine fault shutdown
- Engine monitoring display
- Dual battery
- Engine status display

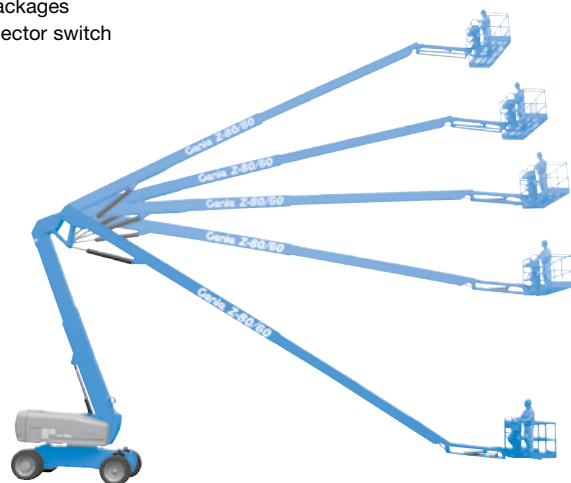
OPTIONS & ACCESSORIES

PRODUCTIVITY

- Platform swing gate
- Half-mesh platform inserts with swing gate
- Platform top auxiliary rail
- Air line to platform
- Fire resistant hydraulic oil
- Biodegradable hydraulic oil
- Basic hostile environment kit
- Deluxe hostile environment kit
- Deluxe aircraft protection package (6 ft platform only)
- Tool tray
- Fluorescent tube caddy
- Platform work lights
- Front driving lights
- Lockable platform control box covers
- 1.83 m (6 ft) steel platform
- High flotation rough terrain tyres
- Rough terrain non-marking foam-filled tyres

POWER OPTIONS

- 240 V power to platform
- 7 kVA hydraulic generator (240 V/50 Hz)
- Cold Weather Packages
- Retained key selector switch



Genie Australia – Toll free number 1800 788 633

Brisbane (Head Office)
33 Kimberley Street
Darra QLD 4076

Sydney
74 Glendenning Road
Glendenning NSW 2761

Melbourne
374 Hammond Road
Dandenong VIC 3175

Perth
126 Sheffield Road
Welshpool WA 6106

Genie United States

18340 NE 76th Street
P.O. Box 97030
Redmond, Washington
98073-9730

Distributed by:

Effective Date: April 2012. Product specifications and prices are subject to change without notice or obligation. The photographs and/or drawings in this document are for illustrative purposes only. Refer to the appropriate Operators' Manual for instructions on the proper use of this equipment. Failure to follow the Operators Manual when using our equipment or to otherwise act irresponsibly may result in serious injury or death. The only warranty applicable to our equipment is the standard written warranty applicable to the particular product and sale and we make no other warranty, express or implied. Products and services listed may be trademarks, service marks, or trade names of Terex Corporation, Terex South Dakota, Inc., and/or their subsidiaries in the USA and other countries. All rights reserved. Terex is a registered trademark of Terex Corporation in the USA and many other countries. Genie is a registered trademark of Terex South Dakota, Inc. in the USA and many other countries. ©2009 Terex Corporation.

www.genieindustries.com.au

Z-80/60 090327 Ver1

