

2505H Compact Telehandler



APPLICATIONS

- Landscape contractors
- Brick and block layers
- Maintenance and construction work
- Fencing and railway sleeper contractors
- Building supplies
- Multi-storey car park maintenance and construction

JLG's 2505H compact telehandlers have a lift capacity of up to 2,400kg.

Choose from a variety of attachments including pallet fork and carriages, side shift carriages and a manure bucket.

With lift heights up to 5.6m and a reach of up to 3.3m

2 section boom with protected hoses and cylinder

The JLG 2505H is perfect for crowded job sites. Featuring a tight turning radius, compact footprint and low machine height this allows access where other machines can't

55kW Deutz, Tier 4 (final) engine gives you the power you need

Front wheel, all-wheel and crab steer for the access you need.

A spacious cab with air conditioning and easy entry and exit lets you work in greater comfort



131 JLG

www.jlg.com.au

2505H Compact Telehandler

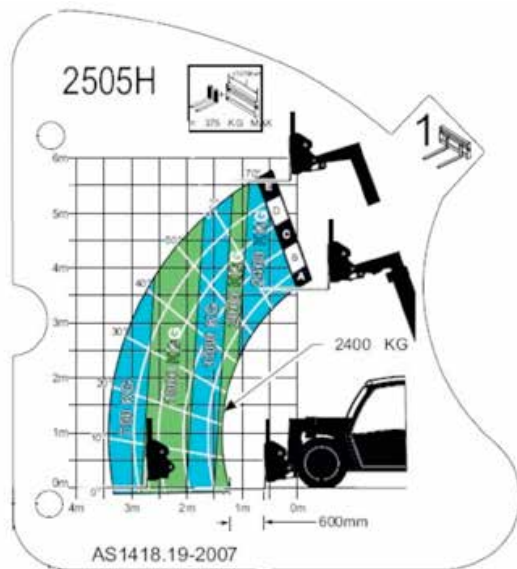


QUESTIONS TO ASK

- What are the ground conditions in the work area?
- What are the site conditions travelling around the site?
- What is the working height needed for the job?
- What is the outreach required for the job?
- What is the rated capacity of the load on forks?
- Do you need low entry clearance for multi-storey car parks?
- Do you need to drive inside a shipping container to unload materials?
- Do you need the lowest exhaust emissions for operation in multi-storey construction?

KEY SELLING POINTS

- Smoother control, proportional hydra-static 4 wheel drive
- Deutz Tier 4 final Diesel Engine with catalytic converter muffler
- Proportional lift, telescope and fork tilt
- Oscillating rear axle assists four-wheel drive traction
- Front 2 wheel steer, 4 wheel steer, and crab steer
- Air conditioning for operator comfort
- Plug-in analyser in the cab to indicate system functions for servicing and adjustment
- Reversing fan
- AS1418-19 2007 Compliant
- EN15000 Compliant



SPECIFICATIONS

Summary:

Maximum Lift Height	5.6m
Maximum Lift Capacity	2,400kg
Maximum Forward Reach	3.3m
Lift Capacity at Full Height	2,400kg
Lift Capacity at Maximum Reach	750kg
Maximum Reach with 1,000kg	2.5m
Lift Height with Maximum Capacity	5.6m

Engine Standard:

Engine Make	Deutz T4f 2.9 L Turbo (Tier 4 Final)
Gross Output	55kW

Transmission:

Drive	4W
Transmission Type	Hydrastatic
No. of Gears Fwd/Reverse	1F/1R
Maximum Speed	27km/h

Tyres:

Tyres Front Standard	14x17.5 (pneu or foam)
Tyres Rear Standard	14x17.5 (pneu or foam)

Chassis:

Steering Type	2W/4W/Crab
---------------	------------

Hydraulics:

Pump Type	Gear
Maximum Implement Flow	72.3LPM
No. of Auxillary Services	1

Capacities:

Fuel Tank	91 Ltr
-----------	--------

Static Dimensions:

Length	3.70m
Overall Width	1.80m
Height Over Cab	1.90m
Wheelbase	2.30m
Ground Clearance	0.27m
Turn Radius Over Tyres	3.10m
Weight	5,310kg

Performance:

Load Centre	0.6m
-------------	------