

520AJ

ARTICULATING BOOM LIFT



Performance

Platform Height	16.00 m
Working Height	18.00 m
Horizontal Outreach	10.00 m
Up and Over Height	7.30 m
Weight	7,820 kg
Swing	355 Degrees Non-Continuous
Platform Capacity	250 kg
Platform Size	0.76 x 1.83 m
Platform Rotator	180 Degrees Hydraulic
Jib	1.24 m
Range of Articulation	145 degrees (+76, -69)
Drive Speed	6.8 km/hr
Gradeability	45%
Turning Radius	
Inside	2.06 m
Outside	4.78 m

Standard Specifications

Power

Diesel Engine	Duetz D2011LO3 36.4KW
Fuel Tank Capacity	60.5 L
Fuel Consumption	2.5 L/hr average

Hydraulic System

Tank Capacity	136 L
System Capacity	144 L
Auxiliary Power	12V DC

Tyres

Standard	315/55 D20 Foam Filled Non-marking
----------	------------------------------------

Standard Features

- Generator incl. Outlet to Platform and ELCB
- 1.24 m Articulating Jib
- 355 Degree Non-Continuous Swing
- Platform 0.76 x 1.83 m Side Entry Self-Closing, Self-Locking Gate
- 180 Degree Hydraulic Platform Rotator
- Platform Console Machine Status Light Panel*
- 5 Degree Tilt Alarm/Indicator Light
- Flashing Amber Beacon
- Swing-Out Engine Tray
- Gull-Wing Steel Turntable Hoods
- 12V-DC Auxiliary Power
- Hourmeter
- Interactive Display at Ground Controls
- Proportional Controls
- Control ADE® System
- Lifting/Tie Down Lugs
- Horn
- Oscillating Axle
- Cast Aluminum Control Box
- Reduced Time to Full Height
- Motion Alarm

* Provides indicator lights at platform control console for system distress, low fuel, 5 degree tilt light, and foot switch status.



Accessories & Options

- 0.76 x 1.25 m Platform
- 1/2 in. Air Line to Platform
- SkyGuard®
- Squawker / White Noise Motion Alarm
- Chassis Illumination Lights
- Platform Worklights
- Hostile Environment Kit
- Special Hydraulic Oils
- Pipe Rack
- Cable Tray Carrier
- Operator Tool Tray
- Catalytic Exhaust Purifier

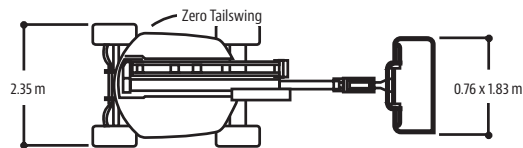
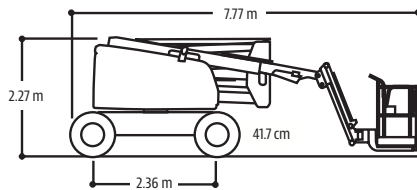
520AJ

ARTICULATING BOOM LIFT

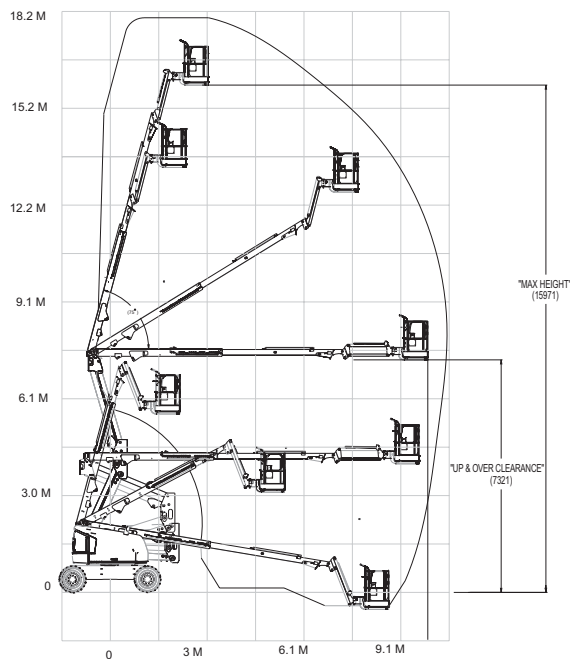


Dimensions

All dimensions are approximate.



Reach Diagram



The JLG "1 & 5" Warranty

JLG Industries, Inc. backs its products with its exclusive "1 & 5" Warranty. We provide coverage on all products for one (1) full year and cover all specified major structural components for five (5) years. Due to continuous product improvements, we reserve the right to make specification and/or equipment changes without prior notification. This machine meets or exceeds AS/NZS 1418.10 2011 as originally manufactured for intended applications.

JLG Industries (Australia)
 358 Park Road
 Regents Park, NSW 2143
 Telephone 02 8718 6300
 Fax 02 8718 6377
www.jlg.com.au

An Oshkosh Corporation Company