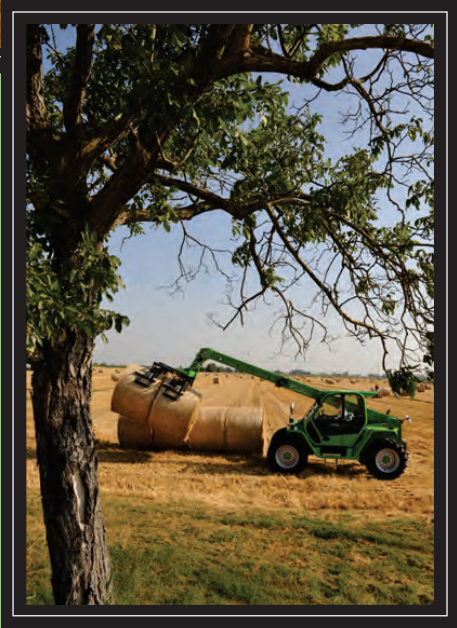
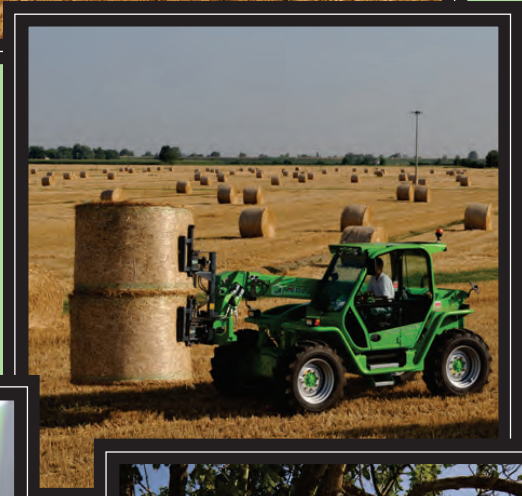
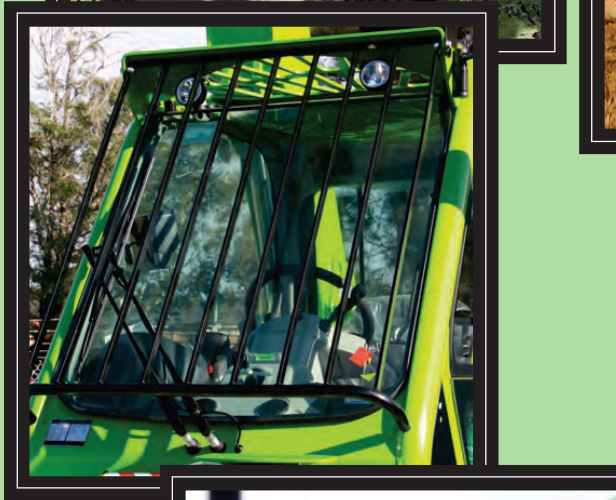


TURBOFARMER P 41.7

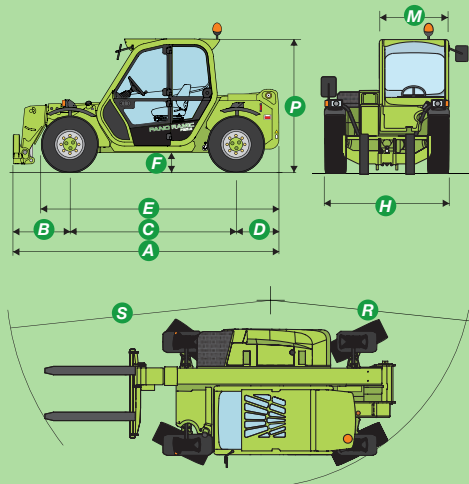


KEY SPECIFICATIONS

Total weight unladen with forks (kg)	6760
Maximum load capacity (kg)	4100
Maximum lift height (m)	7.00
Maximum forward reach (m)	3.8
Lift height at maximum capacity (m)	5.7
Forward reach at maximum load capacity (m)	1.3
Load capacity at maximum height (kg)	3000
Load capacity at maximum forward reach (kg)	1200
Engine (type/number of cylinders)	Turbo Diesel/4
Tier 3 engine power (kW/hp)	103/140
Fuel capacity (l)	155
Maximum speed (kph)	40
Load -sensing hydraulic pump (bar-l/min)	210-100
Hydraulic oil capacity (l)	105
Electrical circuit (V)	12
Battery (Ah)	100
Cab compliant with ROPS/FOPS standards	✓
4x1 Electro Proportional joystick controls	✓
Tac-Lock hydraulic attachment coupling	✓
Auxiliary boom hydraulics	✓
Two standard forks (1200mm)	✓
Hydrostatic transmission	✓
Finger touch direction control	✓
Inching pedal for precise control	✓
Permanent 4 wheel drive	✓
Four wheel steering	✓
Dry type disc brakes on all wheels	✓
Automatically locking parking brake	✓
405/70-24 tyres	✓
Rear differential lock	✓
Four cab working lights (2f & 2r)	✓
12V electrical on boom head	✓
Air suspension seat	✓
Front window protection	✓
Full size cab with air conditioning	✓
Stability control system	✓

As standard, the longitudinal stability control mechanism locks the telescopic boom if the machine's stability limits are approached. All controls are convenient to operate, with a comprehensive instrument display, visible in all lighting conditions. The TURBOFARMER continues the legendary 360° visibility around the machine, particularly front and rear working areas. The operator has the benefit of the widest handler cab currently available on the market, together with a driver's seat that ensures excellent comfort. The design concept integrates all the components into an exceptionally compact package. The manoeuvrability and precision are further enhanced by a powerful engine and precise hydrostatic transmission. The side mounted engine and position of the transmission and hydraulic systems ensure excellent accessibility for maintenance. Their high operating speed, great precision, flexibility and outstanding performance ensure that the TURBOFARMER will produce the highest productivity in even the toughest conditions.

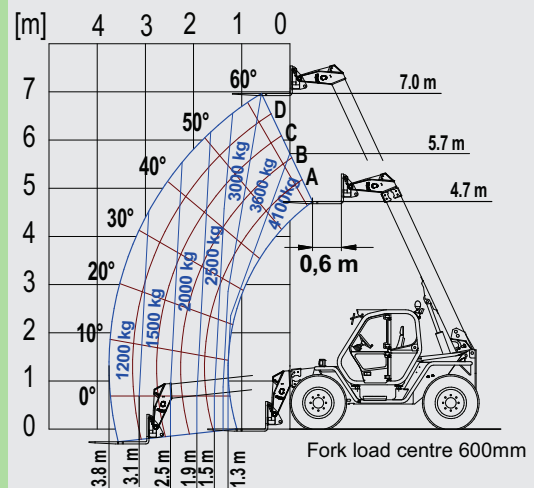
Merlo reserves the right to modify and update the contents of this document at any time. Information and technical data are as available at time of printing. For current information on Merlo products please contact your Merlo dealer.



DIMENSIONS

A (mm)	4300
B (mm)	980
C (mm)	2750
D (mm)	570
E (mm)	3915
F (mm)	480
H (mm)	2230
M (mm)	995
P (mm)	2475
R (mm)	4050
S (mm)	4800

P41.7 Load Chart - Standard forks



1300 657325
merloaustralia.com.au