

liftsmart

LS10-12
Straddle Leg
Electric Stackers



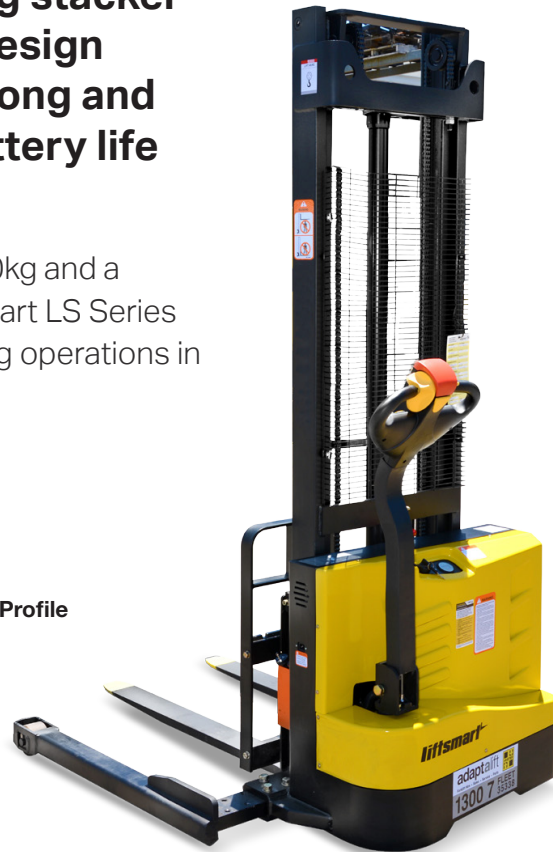
liftsmart

LS10-12

The Liftsmart LS straddle leg stacker series offers an advanced design and features, including a strong and durable frame, extended battery life and comfortable operation.

With a lifting capacity of 1,000kg – 1,200kg and a maximum fork height of 3.5m, the Liftsmart LS Series provides an efficient solution for stacking operations in confined work areas.

- ✓ **LS10-15 Mast Options:**
 - Option H&H: Forklift profile steel mast
 - Option H&C: Forklift profile steel mast & C Profile
 - Option C&C: C Profile steel mast
- ✓ Liftsmart supporting leg design features an embedded steel beam, providing further strength and durability
- ✓ Curtis 1212 Driving Controller can be regulated by the hand set easily
- ✓ 120Ah battery offers longer running time
- ✓ The handle is light and easy to manoeuvre, making operating the machine effortless
- ✓ The mast height when forks are lowered is less than 2m high, making it suitable for most doorways



SPECIFICATIONS

Characteristics	Model		LS10S	LS12S	LS10SS	LS12SS	
			Fork over stacker		Straddle leg stacker		
	1.1	Type Of Drive	Full Electric	Full Electric	Full Electric	Full Electric	
1.2	Operator Type		walkie	walkie	walkie	walkie	
1.3	Capacity	kg	1000	1200	1000	1200	
1.4	Load Center	mm	600	600	600	600	
1.5	Wheel Base	mm	1225	1255	1228	1228	
Wheel	2.1	Wheel Type	PU	PU	PU	PU	
	2.2	Size Of Front Wheels	mm	∅ 78	∅ 78	∅ 96	
	4.1	Size Of Drive Wheels	mm	∅ 220	∅ 220	∅ 220	
	5.1	Size Of Balance Wheels	mm	∅ 124	∅ 124	∅ 124	
	6.1	Wheels Quantity (Driving+banlance+loaden)	pcs	1+1+4	1+1+4	1+1+2	
Specifications	4.1	Mast Lower Height	mm	2065/1785/2035/2185/2235		2095/1815/2065/2215/2265	
	4.2	Mast Extend Height	mm	2065/2000/3500/3800/3950		2480/3380/3880/4180/4380	
	4.3	Lifting Height	mm	1600/2500/3000/3300/3500		1600/2500/3000/3300/3500	
	4.4	Mast Profile	mm	C model	C Model (rib reinforcement)	C model	C model (rib reinforcement)
	4.5	Overall Length	mm	1770	1770	1690/1690/1690/1690/1705	
	4.6	Fork Width	mm	160	160	100	100
	4.7	Overall Width	mm	820	820	820	820
	4.8	Fork Length	mm	1150	1150	1070	1070
	4.9	Outer Width Of The Fork	mm	520/540/560/650/680		200-800	200-800
	4.10	Lowered Height Of Fork	mm	90	90	70	70
	4.11	Clearance	mm	30	30	30	30
	4.12	Min.turning Radius	mm	1430	1460	1430	1430
	4.13	Rear Body Height	mm	760	760	760	760
	4.14	Aisle Width (800*1200mm Pallet): Horizontal/vertical	mm	2530	2530	2510/2510/2510/2510/2530	
	4.15	Aisle Width (1000*1200mm Pallet): Horizontal/vertical	mm	2590	2590	2590/2590/2590/2590/2600	
Weight	2.1	Service Weight Without Battery	kg	450/500/520 /550/480	470/520/540 /570/580	530/560/580 /600/620	550/580/600 /620/640
	2.2	Service Weight With Battery	kg	500/550/570 /600/630	520/570/590 /620/630	580/610/630 /650/670	600/630/650 /670/690
Performance	5.1	Travel Speed	laden	km/h	3.5	3.5	3.5
			unladen	km/h	4	4	4
	5.2	Lift Speed	laden	mm/s	75	75	75
			unladen	mm/s	150	150	150
	5.3	Lower Speed	laden	mm/s	145	145	145
			unladen	mm/s	80	80	80
	5.4	Gradeability	laden	%	3	2	3
			unladen	%	7	6	7
Electricengine	6.1	Drive Motor	Kw	0.65	0.65	0.65	
	6.2	Lift Motor	Kw	1.5	2.2	1.5	
	6.3	Battery Voltage/capacity(20h)	V/Ah	(12V/75Ah)*2		(12V/75Ah)*2	
	6.4	Battery Size	mm	(260*169*215)*2		(260*169*215)*2	
	7.4	Brake Type		Electromagnetic		Electromagnetic	
	8.4	Control System		1212P-2501 (CURTIS)		1212P-2501 (CURTIS)	

Load Chart:	LS10		LS12	
	Lift Height (mm)	Actual Capacity (kg)	Lift Height (mm)	Actual Capacity (kg)
	0	1500	0	1500
	3000	1500	3000	1500
	3500	1000	3500	1000
4000	600	4000	600	

Branches

VICTORIA

Melbourne - Springvale (Head Office)

📍 1574 Centre Rd
Springvale, VIC, 3171
☎ [03] 9547 8000

Melbourne - Truganina

📍 42-44 Jessica Way
Truganina, VIC, 3029
☎ [03] 9394 4090

TASMANIA

Tasmania

📍 87a Devonport Road
Spreyton, TAS, 7310
☎ [03] 6427 3966

NEW SOUTH WALES

Sydney (State Office)

📍 219 Newton Rd
Wetherill Park, NSW, 2164
☎ [02] 8788 1777

Riverina

📍 5 Favell Street
Griffith, NSW, 2680
☎ [02] 6962 7343

Newcastle

📍 3/46 Munibung Rd
Cardiff, 2285
☎ [02] 4954 7724

WESTERN AUSTRALIA

Perth (State Office)

📍 Unit 1, 1-9 Kurnall Road
Welshpool, WA, 6106
☎ [08] 9352 9200

Kalgoorlie

📍 15 Close Way
Kalgoorlie, WA, 6430
☎ [08] 9091 8599

QUEENSLAND

Brisbane (State Office)

📍 11 Lombank Street
Acacia Ridge, QLD, 4110
☎ [07] 3373 5111

Rockhampton

📍 62 Glenmore Road
Park Avenue, Rockhampton
QLD 4700
☎ [07] 4922 8874

Townsville

📍 39 Duckworth Street
Garbutt, QLD, 4814
☎ [07] 4778 2000

SOUTH AUSTRALIA

Adelaide (State Office)

📍 18-22 Churchill Rd. Nth.
Dry Creek, SA, 5094
☎ [08] 8360 3444

Mt. Gambier

📍 1 Avey Road
Mt. Gambier, SA, 5290
☎ [08] 8725 7809

Service Centres

VICTORIA

Bendigo
Warrnambool
Ballarat
Shepparton
Wodonga
Mildura

TASMANIA

Hobart
Launceston
Burnie

NEW SOUTH WALES

Dubbo
Griffith
Tamworth
Newcastle
Wollongong
Canberra
Tumut
Bathurst
Wagga Wagga
Albury
Gosford
Coffs Harbour

SOUTH AUSTRALIA / NT

Riverland
Darwin

QUEENSLAND

Rockhampton
Mackay
Cairns
Gladstone
Townsville
Mt Isa
Toowoomba
Gold Coast
Sunshine Coast

WESTERN AUSTRALIA

Margaret River
Karratha