



## Self-Propelled Telescopic Booms

### SX-135 XC™

### Specifications

Model	SX-135 XC	
Measurements	Metric	US
Working height maximum*	43.15 m	141 ft
Platform height maximum	41.15 m	135 ft
Horizontal reach maximum	27.43 m	90 ft
Below ground reach	6.00 m	19 ft 8 in
▲ Platform length	0.91 m	3 ft
▲ Platform width	2.44 m	8 ft
▲ Height - stowed	3.05 m	10 ft
▲ Length - stowed	19.76 m	64 ft 10 in
Length - transport (jib tucked under)	13.28 m	43 ft 7 in
▲ Width - axles retracted	2.49 m	8 ft 2 in
Width - axles extended	3.94 m	12 ft 11 in
▲ Wheelbase - axles retracted	4.11 m	13 ft 6 in
Wheelbase - axles extended	4.11 m	13 ft 6 in
▲ Ground clearance - center	0.38 m	1 ft 3 in

### Productivity

Lift capacity	300 kg / 454 kg	660 lb / 1,000 lb
Platform rotation	160°	
Vertical jib rotation - up/down	70° / 55°	
Turntable rotation	360° continuous	
Turntable tailswing - axle retracted	1.14 m	3 ft 9 in
Turntable tailswing - axle extended	1.70 m	5 ft 7 in
Drive speed - stowed	4.3 km/h	2.7 mph
Drive speed - out of stowed	0.65 km/h	0.4 mph
Gradeability - stowed**	35%	
Turning radius - axle retracted: inside	8.03 m	26 ft 4 in
outside	9.96 m	32 ft 8 in
Turning radius - axle extended: inside	2.90 m	9 ft 6 in
outside	6.17 m	20 ft 3 in
Controls	12 V DC proportional	
Tyres	445D50/710HD	

### Power

Power source	Deutz TD2011L04i, 74 hp (55 kW)	
Auxiliary power unit	12 V DC	
Hydraulic tank capacity	227 L	60 gal
Fuel tank capacity	151 L	40 gal

### Weight\*\*\*

4WD	21,636 kg	47,699 lb
-----	-----------	-----------

### Standards Compliance

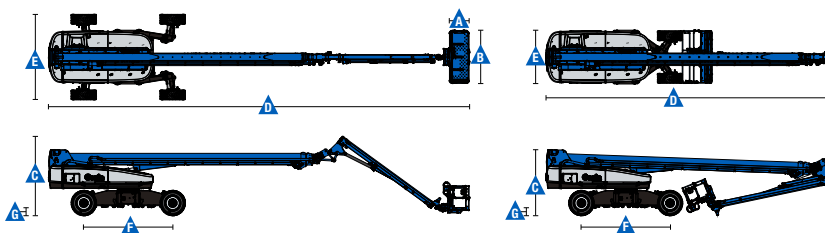
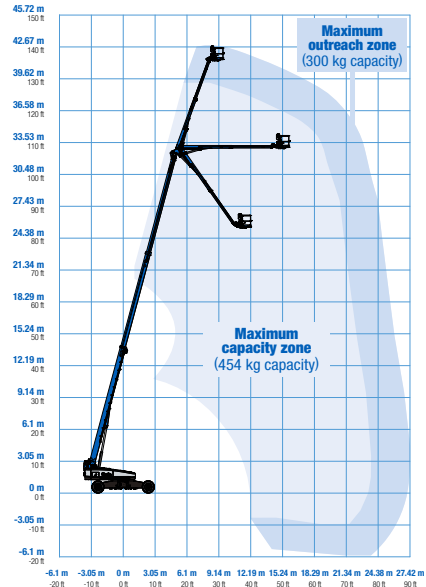
AS 1418.10

\* The metric equivalent of working height adds 2 m to platform height. U.S. adds 6 ft to platform height.

\*\* Gradeability applies to driving on slopes. See operator's manual for details regarding slope ratings.

\*\*\* Weight will vary depending on options and/or country standards.

### Range Of Motion SX-135 XC



[www.genielift.com.au](http://www.genielift.com.au)



## Self-Propelled Telescopic Booms

### SX-135 XC™

### Features

#### Standard Features

##### Measurements

##### SX-135 XC

- 43.15 m (141 ft) working height
- 27.43 m (90 ft) horizontal reach
- 300 kg (660 lb) unrestricted and 454 kg (1,000 lb) restricted lift capacity

##### Productivity

- X-chassis™ extendable axles
- 5.49 m (18 ft) to 9.14 m (30 ft) Telescoping Jib-Extend™
- Self-levelling platform
- 160° Hydraulic platform rotation
- Proportional joystick controls
- Hydraulic oil cooler
- Thumb rocker steering
- Drive enable
- AC power to platform
- Horn
- Hour meter
- Tilt alarm
- Descent alarm
- Alarm package
- 360° continuous turntable rotation
- Positive traction 4WD
- Two speed wheel motors
- Four wheel high angle steer
- Four steering modes: front, rear, crab and coordinated
- On board full diagnostics and engine monitoring display
- Ground control box cover
- Certified load sensor
- Telematics-Ready Connector
- Hydraulic oil cooler
- Lockable platform control box cover

##### Power

- 7.5 kW generator - 240V/50 Hz
- 12 V DC auxiliary power
- Auto engine fault shutdown
- Swing out engine tray

##### Platform

- Steel 2.44 (8 ft) tri-entry platform with side swing gate

##### Engine

- Deutz turbo diesel 55 kW (74 hp)

##### Drive/Steer

- 4WD
- 4WS

##### Axle

- Extendable axles

##### Tyres

- Rough terrain foam-filled

#### Options & Accessories

##### Productivity Options

- Half-mesh platform inserts with swing gate
- Hostile environment package<sup>(1)</sup>
- Work light package
- Biodegradable hydraulic oil
- Airline to platform<sup>(1)</sup>
- Operator Protective Structure
- Operator Protective Alarm

##### Power Options

- Diesel catalytic purifier muffler
- Diesel scrubber/catalytic muffler
- Intake air pre-cleaner



<sup>(1)</sup> Factory-fit option only

Genie – Toll free number 1800 788 633

**Brisbane**  
HEAD OFFICE

33 Kimberley Street  
Darra QLD 4076

**Sydney**

74 Glendenning Road  
Glendenning NSW 2761

**Melbourne**

374 Hammond Road  
Dandenong VIC 3175

**Adelaide**

16-18 Nixon Road  
Wingfield SA 5013

**Perth**

126 Sheffield Road  
Welshpool WA 6106

**Darwin**

33 McCourt Road  
Yarrowonga NT 0830

Genie USA

18340 NE 76th Street  
P.O. Box 97030  
Redmond, Washington  
98073-9730

Distributed By:

Effective Date: May, 2017. Product specifications and prices are subject to change without notice or obligation. The photographs and/or drawings in this document are for illustrative purposes only. Refer to the appropriate Operator's Manual for instructions on the proper use of this equipment. Failure to follow the appropriate Operator's Manual when using our equipment or to otherwise act irresponsibly may result in serious injury or death. The only warranty applicable to our equipment is the standard written warranty applicable to the particular product and sale and we make no other warranty, express or implied. Products and services listed may be trademarks, service marks or trade names of Terex Corporation and/or their subsidiaries in the USA and many other countries. Genie is a registered trademark of Terex South Dakota, Inc. © 2017 Terex Corporation.

SX-135 XC 170503

[www.genielift.com.au](http://www.genielift.com.au)