



PANORAMIC P27.6

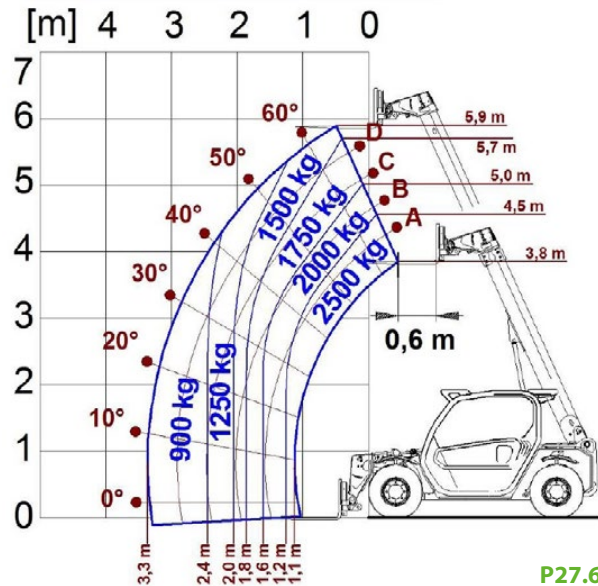




| PERFORMANCE AND FEATURES | P27.6AU | | |
|--|----------------------------|--|--|
| PERFORMANCE | | | |
| Total unladen weight (kg) | 4850 | | |
| Maximum capacity (kg) | 2500 | | |
| Lifting height (m) | 5,9 | | |
| Maximum reach (m) | 3,3 | | |
| Maximum operating height (m) | 4,5 | | |
| Maximum operating reach (m) | 1,2 | | |
| Capacity at maximum height (kg) | 1500 | | |
| Capacity at maximum reach (kg) | 900 | | |
| Lateral boom movement (mm) | - | | |
| Tilting correction (%) | - | | |
| Boom sections | 2 | | |
| POWERTRAIN | | | |
| Turbo motor | Kubota V3307 | | |
| Displacement/cylinders | 3300/4 | | |
| Engine Power (kW/HP) | 55,4/75 | | |
| Anti-pollution technology | EURO III | | |
| Reversible fan | - | | |
| Maximum speed (km/h) | 40 | | |
| Fuel tank (l) | 70 | | |
| AdBlue tank (l) | - | | |
| Hydrostatic transmission | ● - 1V | | |
| EPD | - | | |
| Axles | Axial | | |
| Reduction hub | Epicyclic | | |
| Machine brakes | Dry discs | | |
| Automatic parking brake | ● | | |
| HYDRAULIC | | | |
| Hydraulic pump | Gear | | |
| Flow rate/pressure (l/min – bar) | 94-210 | | |
| Hydraulic tank | 70 | | |
| Hydraulic outlet at the top of the boom | ● | | |
| Rear hydraulic outlets | ○ | | |
| CAB | | | |
| Cab configuration | ECO | | |
| MCDC | ● | | |
| FOPS LIV II cab | ● | | |
| ROPS cab | ● | | |
| Cab commands | Electromechanical joystick | | |
| Tilting Cab | - | | |
| Reverse shuttle | Finger touch | | |
| CONFIGURATION | | | |
| Cab suspension | - | | |
| Boom suspension | ○ | | |
| Suspension on axles | - | | |
| Work headlights on cab | ○ | | |
| Sun blind | ○ | | |
| Tac-lock | ● | | |
| Provision for a platform | ○ | | |
| Two floating forks | ● | | |
| Inching-Control | ● | | |
| Four-wheel drive | ● | | |
| Four-wheel steering | ● | | |
| Three steering modes | ● | | |
| Standard tyres | 12,0/75-18" | | |
| Optional tyres | - | | |
| Stabilisers | - | | |
| Turret rotation | - | | |
| Type approval as an agricultural tractor | - | | |
| Approval with PNEUMATIC braking | - | | |
| Approval with HYDRAULIC braking | - | | |
| PTO | - | | |
| 3-point linkage | - | | |
| DIMENSION | | | |
| Width (mm) | 1840 | | |
| Height (mm) | 2000 | | |
| Length (mm) | 3910 | | |
| Wheelbase (mm) | 2450 | | |

- Not Available. ● standard. ○ optional.

LOAD CHARTS



P27.6

GLOSSAR

| | |
|---------------------------|--|
| SCR | Selective Catalyst Reduction , solution used for the reduction of NOx in the exhaust gases through the injection of a liquid - UREA (AdBlue) - into the exhaust gases. |
| DPF | Diesel Particulate Filter , a solution used to reduce fine particle emissions in exhaust gases |
| DOC | Diesel Oxidation Catalyst , a solution used to reduce carbon monoxide (CO) and hydrocarbons in exhaust gases |
| EGR | Exhaust Gas Recirculation , a solution used to reduce NOx in exhaust gases by recirculating gas inside the combustion chamber of the engine. |
| 1-2V | 1 or 2 speed Merlo gearbox |
| CVTronic | Continuous variation Merlo gearbox , for constant acceleration without loss of torque |
| EPD | Eco Power Drive , Merlo electronically-controlled hydrostatic transmission Electronic, enables effective RPM management in order to reduce overall fuel consumption by the machine |
| EPD Plus | In addition to the EPD Control , it is also possible to work using Speed Control (maintaining a constant travel speed) and Heavy Load (management of RPM in order to maximise performance for tasks such as: bucketing operations, heavy duty unloading, etc.) |
| EPD Top | In addition to the EPD Plus control function, this enables the RPM to be managed directly using the joystick |
| Gear | Fixed displacement pump with gears , combined with an open centre hydraulic distributor |
| LS | Variable displacement pump with Load Sensing control, combined with a closed centre hydraulic distributor |
| LS+FS | Variable displacement pump with Load Sensing control, combined with a closed centre hydraulic distributor equipped with solenoid valves and Flow Sharing control. |
| Kabine ECO/PREMIUM | MODULAR type cabin with simplified or PREMIUM equipment |
| MCDC | Merlo Dynamic Load Control, electronic control of the machine's anti-overflow system. • Light : Simplified version; • Complete : Version with display in cab. |
| FOPS | Falling object protective structure, the system which shields the operator from heavy objects falling onto the cab. Two levels: • FOPS Liv I : Object with a weight of 45 kg falling from 3 metres • FOPS Liv II : Object with a weight of 227 kg falling from 5.2 metres |
| ROPS | Roll-over protection system (or roll-over protection structure), the system that protects the operator if the vehicle rolls over |
| Finger Touch | Driving direction inversion system mounted on the steering column |
| Dual Reverse | Dual driving direction inversion system, on both the steering column and the joystick |
| Tac-lock | Hydraulic attachment clamping system controlled from the cab |



MERLO S.P.A.

Via Nazionale, 9
12010 S. Defendente di Cervasca
(Cuneo) Italia
Tel. +39 0171 614111
Fax +39 0171 684101

info@merlo.com
www.merlo.com



DS_P276_0118_AU