

DINGLI

Exceed · New Height

BA28ERT

Articulating Boom Lifts

SPECIFICATIONS

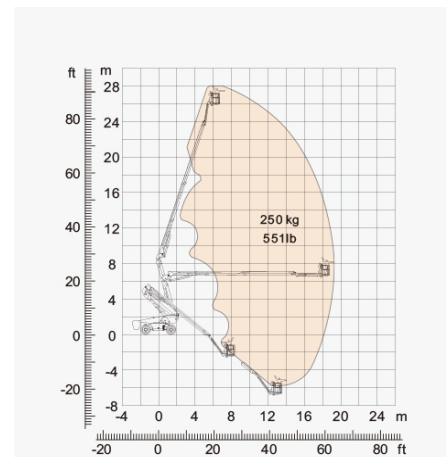
Size	Metric	British
Max. Working Height	28.1m	92ft 2in
Max. Platform Height	26.1m	85ft 8in
Max. Operating Range(+0.6m)	19.4m	63ft 8in
Max. Platform Range	18.8m	61ft 8in
Overall Length(Stowed) A	11.83m	38ft 10in
Overall Length(Transport)	12.03m	39ft 6in
Overall Width(Stowed) B	2.5m	8ft 2in
Overall Width(Transport)	2.28m	7ft 6in
Overall Height(Stowed) C	2.89m	9ft 6in
Overall Height(Transport)	2.61m	8ft 7in
Platform Size(Length×Width)	2.44m×0.91m	8ft×3ft
Turntable Tailswing	1.61m	5ft 3in
Ground Clearance D	0.41m	1ft 4in
Wheelbase E	2.8m	9ft 2in
Turning Radius(Inside/Outside)	1.87m/3.22m	6ft 2in/10ft 7in
Tyres	385/45-28	385/45-28
Up And Over Clearance	9.14m	29ft 12in
Max. Down Probing Depth	6.61m	21ft 8.2in

Performance		
S.W.L	250kg	551lb
Max. Occupants	2	2
Gradeability	30%	30%
Travel Speed(Stowed)	6km/h	6km/h
Travel Speed(Raised)	1.1km/h	1.1km/h
Max. Working Slope	X-5°/Y-5°	X-5°/Y-5°
Turret Rotation	360°Continuous	360°Continuous
Platform Rotation	180°	180°
Jib Movement	135°	135°

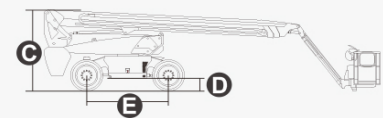
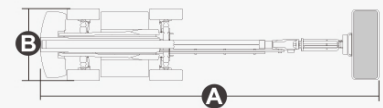
Weight		
Overall Weight	18400kg	40565lb

Power		
Lithium Battery	520Ah/80V	520Ah/80V
Charger	90-264VAC 6.6kW	90-264VAC 6.6kW
Driving Motor	18kW 3243rpm	18kW 3243rpm
Lifting Motor	24kW 2150rpm	24kW 2150rpm
Hydraulic Tank	165L	36gal

* The platform height plus 2m (7ft in British standard) is the working height.
Standards Compliance



Range of Motion



DINGLI

Exceed · New Height

BA28ERT

Articulating Boom Lifts

FEATURES

Standard Items

- 2.31m (7ft 7in) jib boom
- Front Oscillating Axle
- Four-wheel Steering
- Four-wheel Drive
- Self-leveling Platform
- 180° Left And Right Swing Platform
- Proportional Joystick Controls
- Thumb Rocker Steer
- Drive Enable
- Ac Power Cord To Platform
- Tilt Alarm
- Descent Alarm
- Flash
- Horn
- Hour Meter
- Integral Integrated Special Drive Axle For Construction Machinery
- 360° Continuous Turntable Rotation
- Positive Traction Four Wheel Drive
- Platform Load Sense System
- Fault Diagnosis System
- Operator Anti-crushing Protection System
- Harsh Environment Kits (includes Cylinder Sleeves, Boom Dust Kits, Ground And Platform Control Box Covers)
- 12v Dc Auxiliary Power
- Lithium battery 520Ah/80V *
- Driving Motor 18kW 3243rpm
- Lifting Motor 24kW 2150rpm

Optional Items

Tire Options

- Rough Terrain Foam-filled **
- Rough Terrain Non-marking Foam-filled

Hydraulic Oil Options

- Hydraulic Oil No. 46 (mineral Oil) **

Additional Items

- Hydraulic Generator
- Gps Module
- Biodegradable Hydraulic Oil
- Platform Top Auxiliary Rail
- Air Line To Platform
- Welding Wire To Platform
- Work Light Package
- Aircraft Protection Package
- Protective Cover For Ac Power Plug
- Main Telescopic Boom Oil Pipe Guard
- Anti-collision Bar Installed On Working Platform
- Working Platform Outer Anti-collision Bar
- Protective Net Installed Around Working Platform
- Head Anti-collision Device Installed On Working Platform
- Fast charging plug

* The Battery Capacity Is The Nominal Value, And The Actual Battery Capacity Of The Machine Shall Prevail.
** Factory Default, If You Have Other Needs, Please Inform Dingli Regional Sales.

ZHEJIANG DINGLI MACHINERY CO., LTD.

No.188 Qihang Road, Deqing, Zhejiang P.R.China 313219
Telephone +86(572)8681688
Fax +86(572)8681960
E-Mail export@cndingli.com
[Http://www.cndingli.com](http://www.cndingli.com)



Due To Continuous Technology Updates, Technical Parameters Are Subject To Change Without Notice.
This Picture Book Is For Reference Only, The Actual Product Shall Prevail. The Copyright Is Owned By
Zhejiang Dingli, Any Content May Not Be Copied Or Copied For Any Purpose Without Written Permission.
2022-01