

DINGLI

Exceed · New Height

BT26SRT

Telescopic Boom Lifts

SPECIFICATIONS

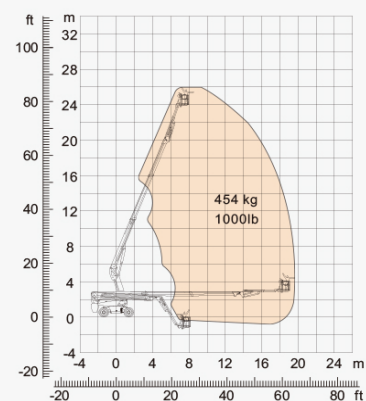
Size	Metric	British
Max. Working Height	26.7m	87ft 7in
Max. Platform Height	24.7m	81ft
Max. Operating Range(+0.6m)	19.8m	65ft
Max. Platform Range	19.2m	63ft
Overall Length(Stowed) A	10.83m	35ft 6in
Overall Length(Transport)	11.12m	36ft 6in
Overall Width(Stowed) B	2.5m	8ft 2in
Overall Width(Transport)	2.28m	7ft 6in
Overall Height(Stowed) C	2.87m	9ft 5in
Overall Height(Transport)	2.59m	8ft 6in
Platform Size(Length×Width)	2.44m×0.91m	8ft×3ft
Turntable Tailswing	1.61m	5ft 3in
Ground Clearance D	0.41m	1ft 4in
Wheelbase E	2.8m	9ft 2in
Turning Radius(Inside/Outside)	1.87m/3.22m	6ft 2in/10ft 7in
Tyres	385/45-28	385/45-28

Performance		
S.W.L	454kg	1000lb
Max. Occupants	3	3
Gradeability	45%	45%
Travel Speed(Stowed)	6km/h	6km/h
Travel Speed(Raised)	1.1km/h	1.1km/h
Max. Working Slope	X-5°/Y-5°	X-5°/Y-5°
Turret Rotation	360°Continuous	360°Continuous
Platform Rotation	180°	180°
Jib Movement	130°	130°

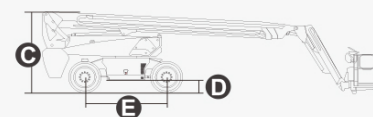
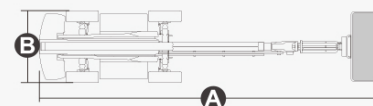
Weight		
Overall Weight	16800kg	37037lb

Power		
Diesel Engine	Deutz TD2.9 L4	Deutz TD2.9 L4
Engine Power	55.4kW 2600rpm	55.4kW 2600rpm
Diesel Tank	135L	29gal
Hydraulic Tank	165L	36gal

* The platform height plus 2m (7ft in British standard) is the working height.
Standards Compliance



Range Of Motion



DINGLI

Exceed · New Height

BT26SRT

Telescopic Boom Lifts

FEATURES

Standard Items

- Telescopic Jib With Maximum Reach Of 3.98m (13ft)
- Front Oscillating Axle
- Four-wheel Steering
- Four-wheel Drive
- Self-leveling Platform
- 180° Left And Right Swing Platform
- Proportional Joystick Controls
- Thumb Rocker Steer
- Drive Enable
- Ac Power Cord To Platform
- Tilt Alarm
- Descent Alarm
- Flash
- Horn
- Hour Meter
- Integral Integrated Special Drive Axle For Construction Machinery
- 360° Continuous Turntable Rotation
- Positive Traction Four Wheel Drive
- Platform Load Sense System
- Fault Diagnosis System
- Operator Anti-crushing Protection System
- Harsh Environment Kits (includes Cylinder Sleeves, Boom Dust Kits, Ground And Platform Control Box Covers)
- 12v Dc Auxiliary Power
- Deutz Td2.9 L4 55.4kw 2600rpm diesel Engine *
- Hydraulic Oil Radiator
- Anti-restart Engine Protection
- Anti-reverse Engine Device
- Auto Engine Fault Shutdown

Optional Items

Tire Options

- Rough Terrain Foam-filled **
- Rough Terrain Non-marking Foam-filled

Hydraulic Oil Options

- Hydraulic Oil No. 46 (mineral Oil) **

Additional Items

- Hydraulic Generator
- Gps Module
- Biodegradable Hydraulic Oil
- Platform Top Auxiliary Rail
- Air Line To Platform
- Welding Wire To Platform
- Work Light Package
- Aircraft Protection Package
- Protective Cover For Ac Power Plug
- Main Telescopic Boom Oil Pipe Guard
- Anti-collision Bar Installed On Working Platform
- Working Platform Outer Anti-collision Bar
- Protective Net Installed Around Working Platform
- Head Anti-collision Device Installed On Working Platform
- Engine Belt Guard
- Waterproof Rubber Pad On Engine Compartment

* Please Consult Dingli Regional Sales According To The Local Emission Standards.

** Factory Default, If You Have Other Needs, Please Inform Dingli Regional Sales.

ZHEJIANG DINGLI MACHINERY CO., LTD.

No.188 Qihang Road, Deqing, Zhejiang P.R.China 313219
 Telephone +86(572)8681688
 Fax +86(572)8681960
 E-Mail export@cndingli.com
[Http://www.cndingli.com](http://www.cndingli.com)

Due To Continuous Technology Updates, Technical Parameters Are Subject To Change Without Notice.
 This Picture Book Is For Reference Only, The Actual Product Shall Prevail. The Copyright Is Owned By
 Zhejiang Dingli, Any Content May Not Be Copied Or Copied For Any Purpose Without Written Permission.
 2022-01

